

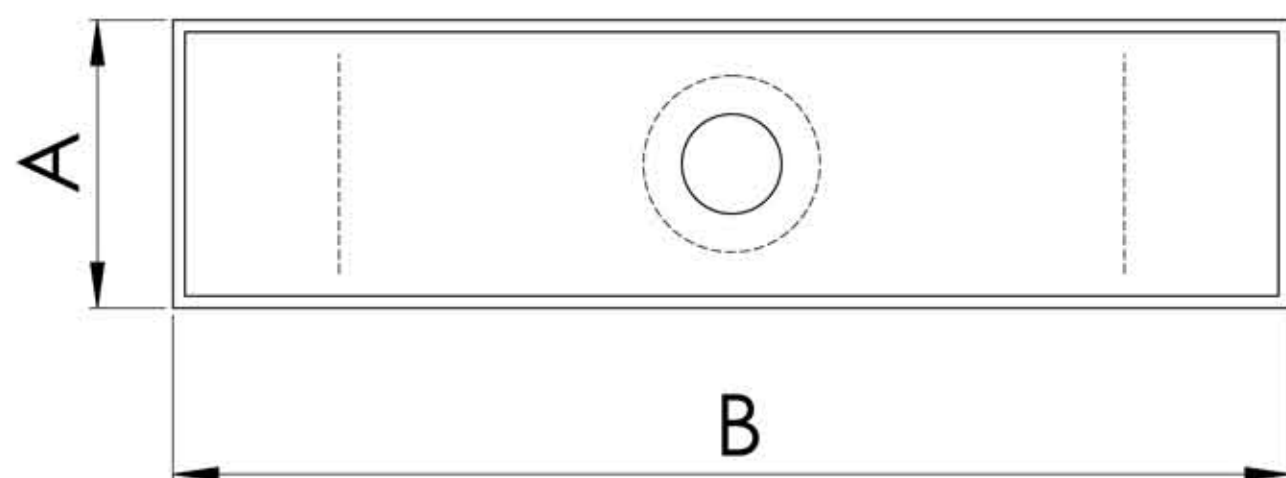
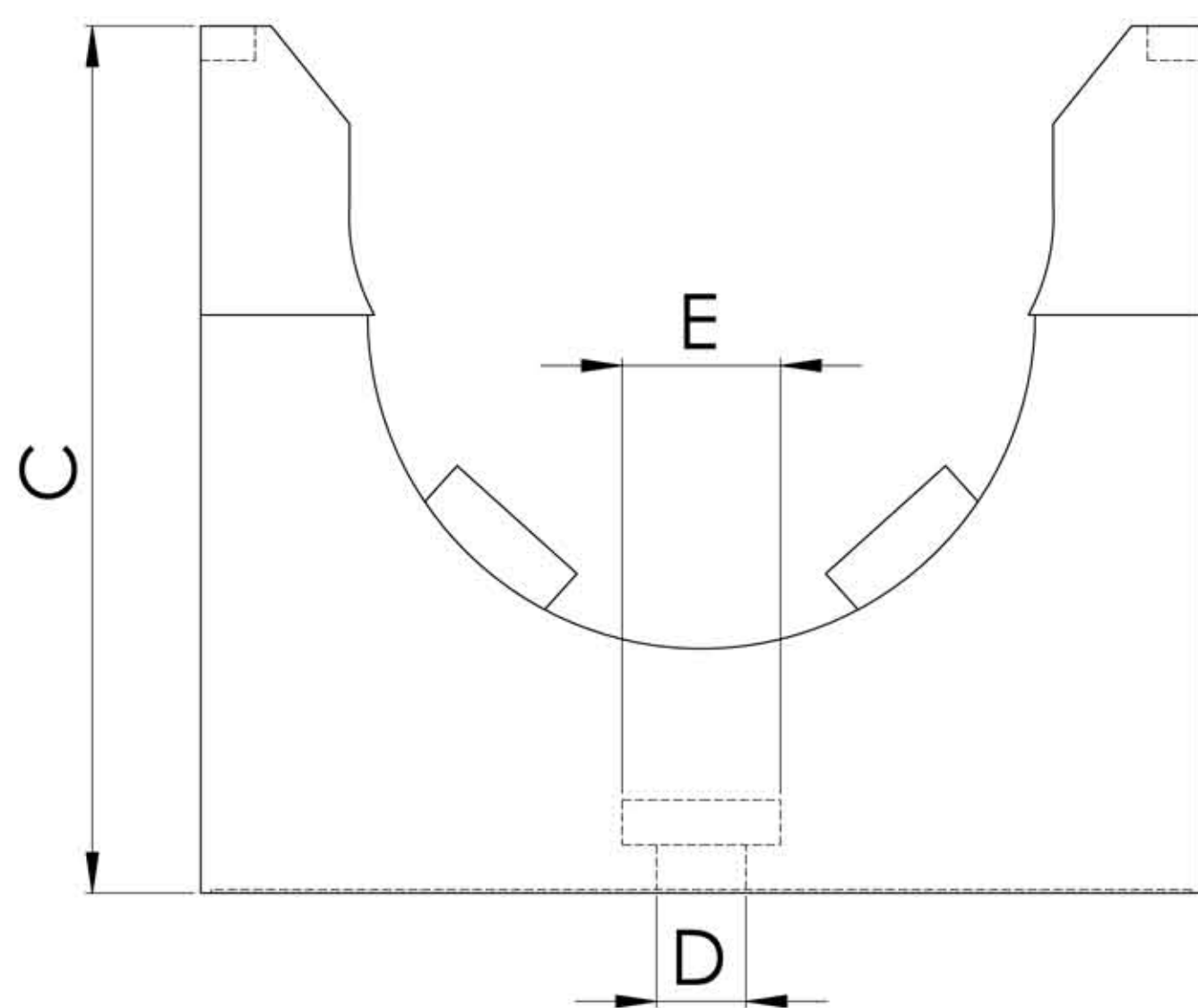
4

3

2

1

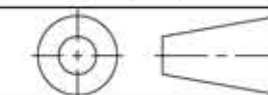
PART NUMBERS BRACKET	FIT NOMINAL CONDUIT SIZE	DIMENSIONS INCHES (MM)				
		A Width	B Length	C Height	D Mfg Hole Ø	E Mfg Hole Recess Ø
MB-09-BK	10	.47 (12)	1.18(30)	.91(23)	.17 (4.4)	.30(7.6)
MB-11-BK	12	.47 (12)	1.18(30)	.91(23)	.17 (4.4)	.30(7.6)
MB-16-BK	17	.59(15)	1.38(35)	1.18(30)	.21 (5.3)	.37(9.4)
MB-21-BK	23	.63(16)	1.65(42)	1.50(38)	.26 (6.5)	.45 (11.5)
MB-29-BK	29	.63(16)	1.97 (50)	1.69 (43)	.26 (6.5)	.46(11.7)
MB-36-BK	37	.71(18)	2.40(61)	2.01(51)	.26 (6.5)	.46(11.7)
MB-48-BK	50	.75(19)	2.91(74)	2.52(64)	.26 (6.5)	.46(11.7)



NOTES:

- 1) GENERAL DIMENSIONS DRAWINGS.
- 2) DIMENSIONS [] ARE IN MILLIMETER.
- 3) DIMENSIONS NOTED ARE FOR REFERENCE ONLY.

Third angle projection



14853 E HINDSDALE AVE, SUITE d
CENTENNAIL, CO 80112-4240, USA
TEL: +1-303-699-1135
TOLL FREE: +1-800-456-9012
E MAIL: info@sealconusa.com,
WEBSITE: WWW.SEALCONUSA.COM

4

3

2