

SEALCON

Committed to Excellence!

Circular Connectors

(M16, M23, M27, M40, RJ45, PoE, Twilock, Twintus)



2D / 3D CAD
Available!

No Minimum
Orders!



Germanischer
Lloyd

Deca
BDE



RoHS



IECEx

ATEX

RUMMEL
Setting Standards

M23 Circular Connectors

Signal



Nickel Plated Brass (EMI Ready)

- Fewer Parts
- One step cable assembly with optional EMI shielding
- No tools required to insert and extract contacts
- Crimp contacts machined
- Solder contacts for manual soldering or dip soldering on PC boards
- SLS (Spring Loaded Sockets) for vibrating environments
- Color coded spacers for male and female inserts
- Modular for a variety of configurations

Over Molded



Great Data Transmission



316L Stainless Steel

Technical Information

Housing:	Copper-Zinc Alloy Die Cast
Housing Surface:*	Nickel Plated Brass & Stainless Steel
Contacts:	Gold plated, Brass Alloy
Type of Contacts:	Crimp, Solder, Dip Solder (PCB)
Number of Contacts:	6, 7, 9, 12, 16, 17, 19
Amp Rating:	8 - 20 A
Voltage Rating:	100 - 630 V
Cable OD:	3 - 17 mm (.12"-.67")
Wire Gauge:	28 - 14 AWG
Temperature:	- 40°F to 257°F (- 40°C to 125°C)
Ratings:	IP 67 / IP 69 K / NEMA 4x

*Tin-plating available upon request

Connector



Brass Protective Cap, w/ Chain, for Connectors w/ Male or Female Thread



Brass Protective Cap, for Connectors with Female or Male Thread

M23 Circular Connectors

Power



Nickel Plated Brass (EMI Ready)



- Simple and quick modular structure
- One step cable assembly with optional EMI shielding
- Crimp contacts machined
- Patented Euro-Lock
- SLS (Spring Loaded Sockets) for vibrating environments
- No tools needed to insert and extract contacts

Stainless Steel



Over Molded



**Intense
& Tough!**

Accessories



Plastic Protective Cap, for Connectors with Male & Female Thread



Assembly Tool
Female Thread Only

Technical Information

Housing:	Copper-Zinc Alloy Die Cast
Housing Surface:*	Nickel Plated Brass & Stainless Steel
Contacts:	Gold plated, Brass Alloy
Type of Contacts:	Crimp
Number of Contacts:	6 & 8
Amp Rating:	8 - 28 A
Voltage Rating:	300 - 800 V
Cable OD:	7 - 18 mm (.28"-.68")
Wire Gauge:	24 - 12 AWG
Temperature:	- 40°F to 257°F (- 40°C to 125°C)
Ratings:	IP 67 / IP 69 K / NEMA 4x

*Tin-plating available upon request

TWILOCK (Quick Disconnect) Connectors



TWILOCK Features

- Easy Handling & Exceptional functionality
- Clearly Defined OPEN/CLOSED position with a Slight Rotation
- Easy connection / disconnection even with limited space
- Multi Functional: Ideal with Twilock and Screw Connection



Watch the TWILOCK Video!



Quick Disconnect Connectors



Technical Information

Housing:	Copper-Zinc Alloy Die Cast
Housing Surface:	Nickel Plated Brass
Contacts:	Gold plated, Brass Alloy
Type of Contacts:	Crimp or Solder - Depends on type of Connector used
Temperature:	-40°F to 257°F (-40°C to 125°C)
Ratings:	IP 67 / IP 69 K / NEMA 4x

For Electrical Information, please refer to the following pages:

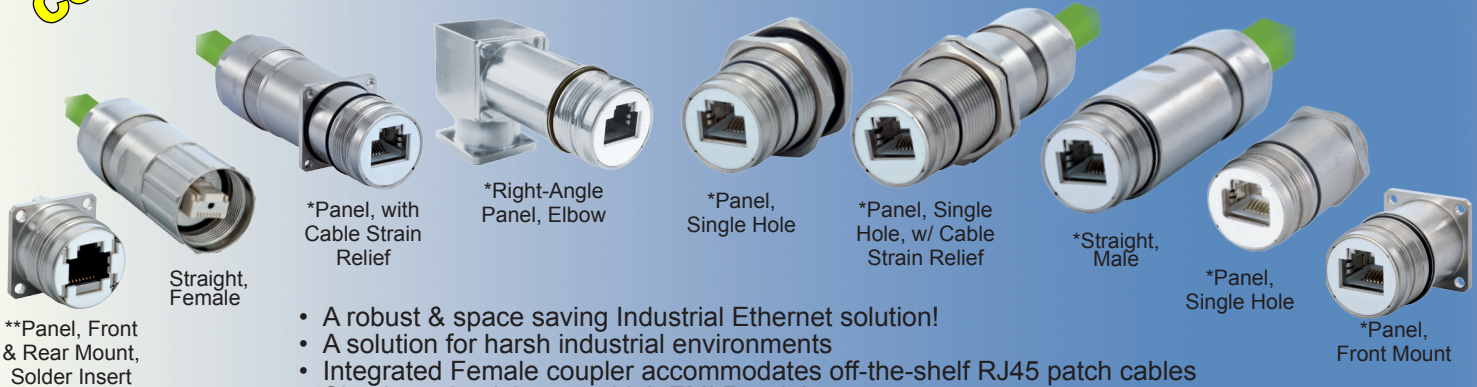
M23 Signal	Page 1	M27 Signal	Page 5
M23 Power	Page 2	M40 Power	Page 5
M23 RJ45	Page 4	M16 Signal	Page 6

- This unique Connector features a panel-mounted **Dual Function Connector** suitable for Threaded and Quick Disconnect connection. The threaded male panel mount has locking grooves.
- Easy Connect/Disconnect even under restricted space conditions.
- EMI Ready

Compact!

M23 RJ45 Industrial Ethernet Connectors

Robust!



- A robust & space saving Industrial Ethernet solution!
- A solution for harsh industrial environments
- Integrated Female coupler accommodates off-the-shelf RJ45 patch cables
- Simple and quick assembly! EMI Ready!

**Panel, Front & Rear Mount, Solder Insert

Technical Information	
Housing:	Copper-Zinc Alloy Die Cast
Housing Surface:	Nickel Plated Brass, (316L) Stainless Steel, Aluminum
Contacts:	Brass Alloy
Type of Inserts:	Coupler & Solder
Amp Rating:	Depends on Type of RJ45 used
Voltage Rating:	Depends on Type of RJ45 used
Cable OD:	3 - 17 mm (.12" - .67") / 7 - 12 mm (.28" - .47") & 11 - 17 mm (.43"-.67")
Number of Position:	4 / 6 / 8 pole, optional 4+2 / 6+2 / 8+2
Temperature:	Depends on RJ45 used
Inserts (for Contacts):	PBT, UL-94, V0, PA6
Ratings:	IP 67 / IP 69 K per EN 60529 (mated) / NEMA 4x

Ex-i M23 Circular Connectors (RJ45 Ethernet) Nickel Plated Brass

Available

Ideal in Low Voltage Applications!

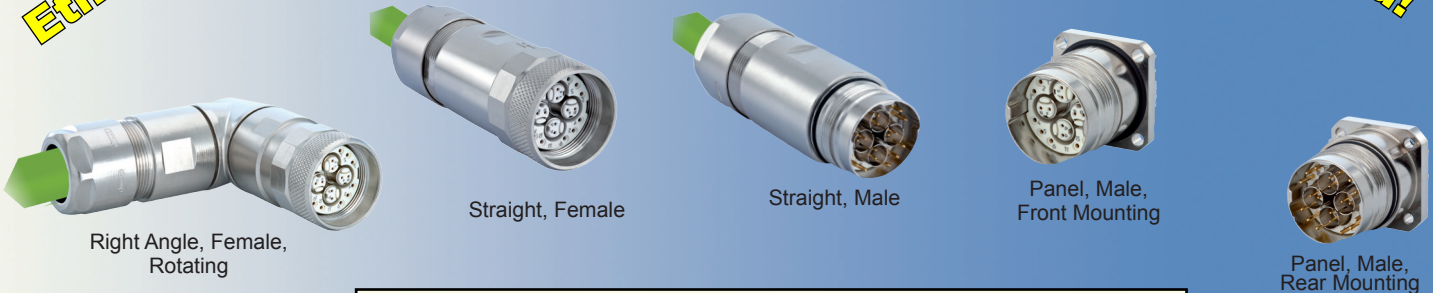


- SCADA
- RTU's
- Data Collection

Fast Ethernet!

M23 PoE (Power over Ethernet)

Rugged!



- A robust & compact Industrial Ethernet Connector
- Flame Resistant, Reliable Crimp Contacts and Vibration Safe

Technical Information	
Housing:	Copper-Zinc Alloy Die Cast
Housing Surface:	Nickel Plated Brass, Aluminum
Contacts:	Brass Alloy
Type of Contacts:	Crimp & Dip Solder
Number of Contacts:	20 = 8 x 0.6 mm Twinax & 12 x 1.0 mm for Power
Amp Rating:	(4 x 2) 2 A, (12) 8 A
Voltage Rating:	160 (4 x 2), 320 (12) V
Cable OD:	11 - 17 mm (.43" - .67")
Wire Gauge:	22-28 AWG on 0.6 mm / 15-28 AWG on 1.0 mm
Temperature:	-40°F to 257°F (-40°C to 125°C)
Ratings:	IP 67 per EN 60529 (Connected) / NEMA 4x

- Offers a High Transmission Speed of up to 10 Gigabytes

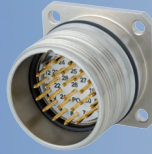
M27 Signal Connectors

**3 Circuits
in One
Connector!**

**Ideal for
Sensors
& Gauges!**



Straight, Female



Panel, Male,
Front Mount



Straight, Male



Plastic Protective Cap, for
Connectors w/ Male Thread



Plastic Protective Cap, for
Connectors w/ Female Thread

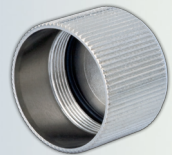
Nickel Plated Brass (EMI Ready)

Technical Information

Housing:	Copper-Zinc Alloy Die Cast
Housing Surface:	Nickel Plated Brass
Contacts:	Gold plated, Brass Alloy
Type of Contacts:	Crimp, Solder, Dip Solder
Number of Contacts:	26 & 28
Amp Rating:	8 A
Voltage Rating:	150 V
Cable OD:	7 - 17 mm (.28"-.67")
Wire Gauge:	17 - 26 AWG
Temperature:	- 40°F to 257°F (- 40°C to 125°C)
Ratings:	IP 67 / IP 69K (EN 60529) / NEMA 4x



Brass Protective Cap, for
Connectors w/ Female Thread



Brass Protective Cap, for
Connectors w/ Male Thread

M40 Power Connectors

**Rugged
Design!**

**For up to
55A & 800V
applications!**



Panel, Female, w/ Knurled
Nut, Front Mount



Straight,
Female



Right Angle Panel,
Male, Rotating



Straight,
Male



Panel, Male,
Single Hole,
Front Mount



Panel, Male,
Front Mount

Standard / EMI



Brass Protective Cap, for Connectors
with Female or Male Thread
with or without chain



Technical Information

Housing:	Copper-Zinc Alloy Die Cast Housing
Surface:	Nickel Plated Brass & 316L Stainless Steel (Upon Request)
Contacts:	Gold plated, Brass Alloy
Type of Contacts:	Crimp
Number of Contacts:	6 & 8
Amp Rating:	28 - 55 A
Voltage Rating:	300 - 800 V
Cable OD:	13 - 28 mm (.51" - 1.10")
Wire Gauge:	6 - 17 AWG
Temperature:	-40°F to 257°F (-40°C to 125°C)
Ratings:	IP 67 / IP 69 K (EN 60529) / NEMA 4x

* Insert are included with all Connector Shells

* Crimp contact are sold separately according to AWG size



Plastic Protective Cap,
for Connectors with
Female or Male Thread



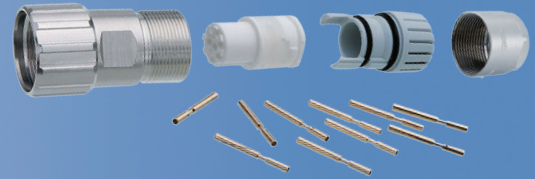
M16 Signal Connectors

**30% smaller
than M23 size!!**



**Nickel Plated Brass
(EMI Ready)**

- Fewer parts makes assembly simpler and more cost effective
- No Tools Required to insert and extract contacts
- Patented Euro-Lock secures contacts in place
- One Step Cable Assembly with optional EMI shielding
- SLS (Spring Loaded Sockets) for vibrating environments
- Available in Over Molded



Crimp Tool



Conduit Adapter

Accessories



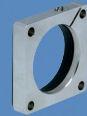
Brass Protective Cap,
w/ Chain, for Connectors
w/ Male or Female Thread



Brass Protective Cap,
for Connectors with
Female or Male Thread

Technical Information

Housing: Copper-Zinc Alloy Die Cast
 M16 Housing Surface: Nickel Plated Brass,
 316L Stainless Steel (Upon Request)
 Contacts: Gold plated, Brass Alloy
 Type of Contacts: Crimp, Dip Solder (PCB)
 Number of Contacts: 3, 8, 10, 15, 18
 Amp Rating: 8 - 20 A
 Voltage Rating: 300 - 800 V
 Cable OD: 2 - 11 mm (.08"-.43")
 Wire Gauge: 14 - 28 AWG
 Temperature: -40°F to 257°F (-40°C to 125°C)
 Ratings: IP 67 / IP 69K (EN 60529) / NEMA 4x



Adapter Flange



Plastic Protective Cap,
for Connectors with
Male & Female Thread

Twintus M12/M16 Dual Connectors

Black Chromated Housing



Twintus
M16



Flange
M20 & M25

- Twintus Connector - A new Low-cost standard for small drives
- Assembly Time is Reduced
- Low Profile & Compact Design

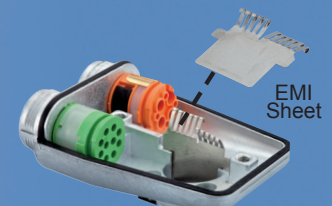
Technical Information

Housing: Copper-Zinc Alloy Die Cast
 M16 Housing Surface: Black Chromated,
 Nickel Plated Brass,
 Uncoated (Upon Request)
 Contacts: Gold plated, Brass Alloy
 Type of Contacts: Crimp, Dip Solder
 M16 Number of Contacts: 3, 8, 10, 15, 18
 M12/M16 Number of Contacts: 8 & 12
 Amp Rating: 8 - 20 A
 Voltage Rating: 300 - 800 V
 Wire Gauge: 14 - 28 AWG
 Temperature: -40°F to 257°F (-40°C to 125°C)
 Ratings: IP 67 / IP 69K (EN 60529) / NEMA 4x

Uncoated Housing



Twintus
M12/M16



EMI
Sheet



Plastic Protective
Cap for Twintus

Why Use Sealcon / Hummel Circular Connectors?

- Easy field assembly, No special tools required to insert or extract contacts
- Modular for a variety of configurations
- All Connectors EMI ready
- Threaded and Quick Disconnect in One
- M23 Compatible: Coninvers/Phoenix, Intercontec, Interconnectron, Molex
- Reliable connection: Contacts with low plug-in force and high mating cycles
- Pre-Tinned Contacts: Reliable, Faster and Safer means of soldering
- Inserts for all types of contacts: Crimp, Solder & Dip Solder
- Reduced Number of Parts & Time-Saving Cable Assembly
- Highest Ratings!
- Large Assortment of Domestic Inventory!
- No Minimum Orders or Quantities!
- Excellent Customer Service!

2D / 3D CAD Available!



ATEX

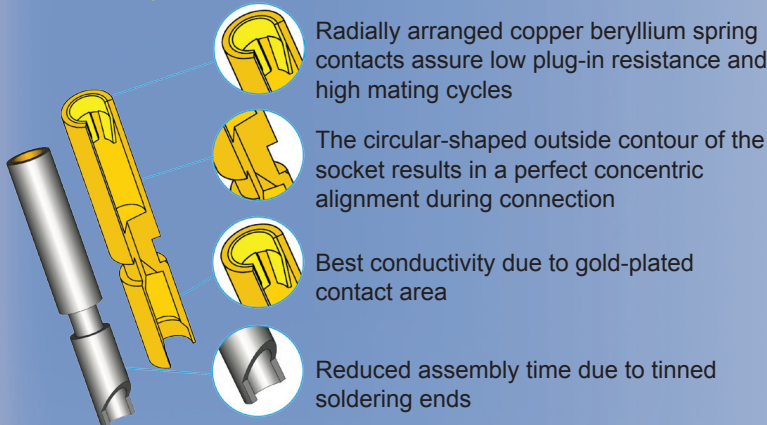
Coming Soon!

Explosion Proof Circular Connector



(Check online for the most current information)

SLS (Spring Loaded Sockets)

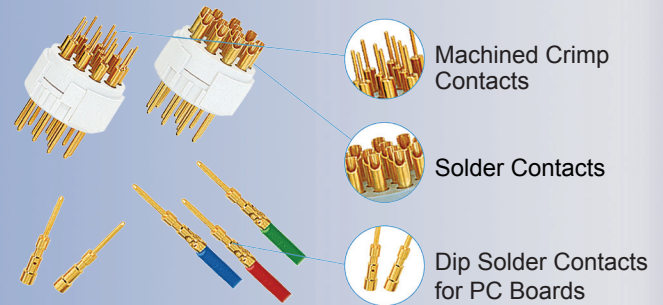


Radially arranged copper beryllium spring contacts assure low plug-in resistance and high mating cycles

The circular-shaped outside contour of the socket results in a perfect concentric alignment during connection

Best conductivity due to gold-plated contact area

Reduced assembly time due to tinned soldering ends



Machined Crimp Contacts

Solder Contacts

Dip Solder Contacts for PC Boards

Specifications may be changed without prior notice.

For most current product information please refer to our website: www.sealconusa.com

Industries Served

- | | | |
|-------------|--------------|-------------------|
| • Wind | • Automation | • Food & Beverage |
| • Motors | • Packaging | • Marine |
| • Lighting | • Diagnostic | • Medical |
| • Robotics | • Sensing | • Traffic |
| • Telecom | • Military | • Pharmaceutical |
| • Hazardous | • Automotive | • Transportation |



7374 S Eagle Street Centennial, CO 80112 USA
 Phone: 303-699-1135 / 800-456-9012 Fax: 303-680-5344
 Web: www.sealconusa.com Email: info@sealconusa.com

