

SPECIFICATIONS:

Materials:

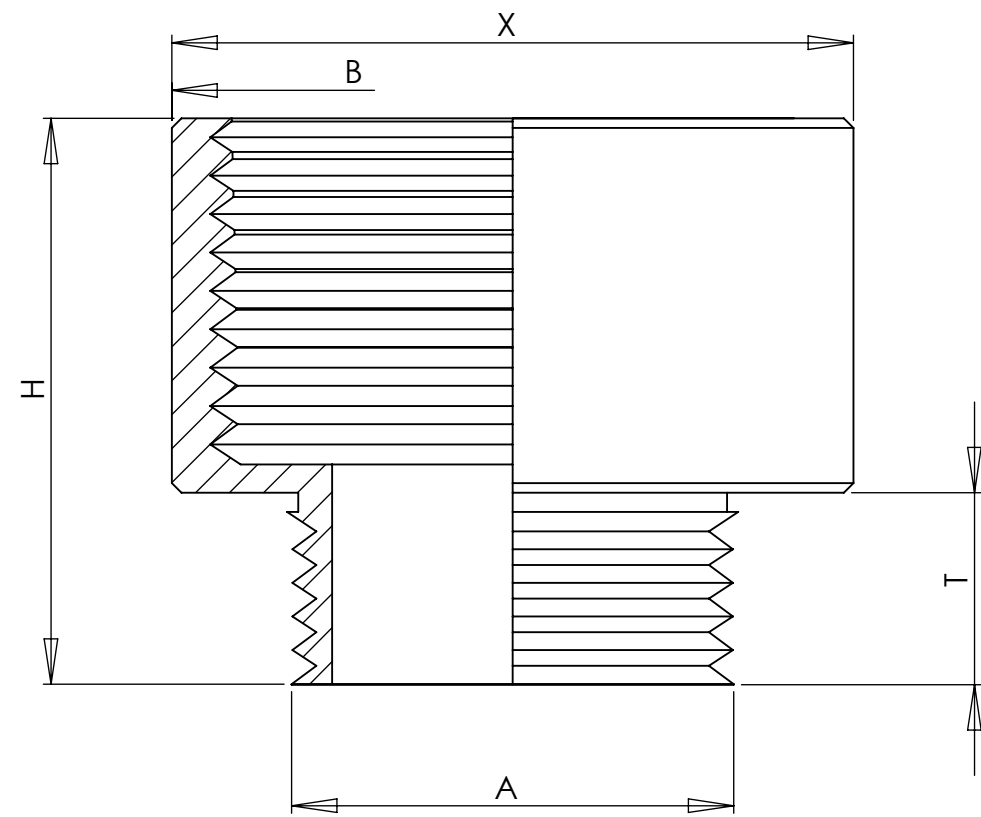
Body: Nickel Plated Brass

Operating Temperature:

-40°F to 212°F (-40°C to 100°C)

Short term 266°F (130°C)

Note: Some sizes available in Gray Nylon



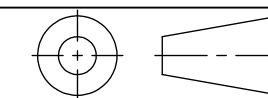
PART NUMBER	MALE THREAD A	FEMALE THREAD B	OUTER DIAMETER X	THREAD LENGTH T	HEIGHT H
EP-0709-BR EP-0911-BR	PG 7 PG 9	PG 9 PG 11	.67 (17) .79 (20)	.20 (5) .24 (6)	.59 (15) .65 (16.5)
EP-0913-BR EP-1113-BR	PG 9 PG 11	PG 13 PG 13	.87 (22) .87 (22)	.24 (6) .24 (6)	.69 (17.5) .69 (17.5)
EP-1116-BR EP-1121-BR	PG 11 PG 11	PG 16 PG 21	.94 (24) 1.18 (30)	.24 (6) .24 (6)	.73 (18.5) .81 (20.5)
EP-1316-BR EP-1321-BR	PG 13.5 PG 13.5	PG 16 PG 21	.94 (24) 1.18 (30)	.26 (6.5) .26 (6.5)	.75 (19) .83 (21)
EP-1621-BR EP-1629-BR	PG 16 PG 16	PG 21 PG 29	1.18 (30) 1.53 (39)	.26 (6.5) .26 (6.5)	.83 (21) .88 (22.5)
EP-2129-BR EP-2936-BR	PG 21 PG 29	PG 29 PG 36	1.53 (39) 1.97 (50)	.27 (7) .31 (8)	.91 (23) 1.08 (27.5)
EP-3642-BR EP-4248-BR	PG 36 PG 42	PG 42 PG 48	2.24 (57) 2.52 (64)	.35 (9) .39 (10)	1.22 (31) 1.30 (33)

EM-1216-BR EM-1620-BR	M12 x 1.5 M16 x 1.5	M16 x 1.5 M20 x 1.5	.71 (18) .87 (22)	.20 (5) .24 (6)	.59 (15) .69 (17.5)
EM-2025-BR EM-2532-BR	M20 x 1.5 M25 x 1.5	M25 x 1.5 M32 x 1.5	1.06 (27) 1.34 (34)	.26 (6.5) .26 (6.5)	.75 (19) .83 (21)
EM-3240-BR EM-4050-BR	M32 x 1.5 M40 x 1.5	M40 x 1.5 M50 x 1.5	1.65 (42) 2.09 (53)	.27 (7) .35 (9)	.91 (23) 1.22 (31)
EM-5063-BR	M50 x 1.5	M63 x 1.5	2.60 (66)	.35 (9)	1.22 (31)

NOTES:

- 1) GENERAL DIMENSIONS DRAWINGS.
- 2) DIMENSIONS [] ARE IN INCHES.
- 3) DIMENSIONS NOTED ARE FOR REFERENCE ONLY.

Third angle projection



7374 S. EAGLE STREET
CENTENNIAL, CO 80112-4221 USA
TEL: +1-303-699-1135
TOLL FREE: +1-800-456-9012
E MAIL: info@sealconusa.com,
WEBSITE: www.sealconusa.com

