

# Nickel Plated Brass Liquid Tight Strain Relief Fittings

## Mini WADI & WADI XL - PG & Metric Threads





Mini WADI Fittings solve space restriction issues. These mini components will fit into tight areas, but maintain the quality of their larger counterparts. The Standard Buna-N/TPE or the FKM O-Ring creates a reliable seal between body and housing. WADI Rating: 70 PSI, 5 BAR, IP 68.



### Typical Mini WADI Applications:

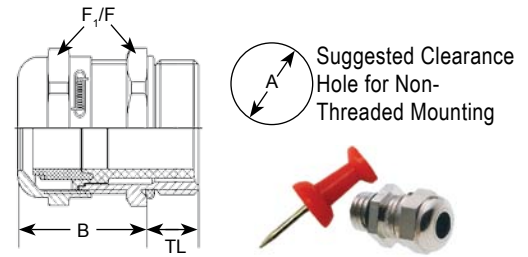
- Fiber optics
- Sensors
- Cameras
- Switches
- Small appliances


Mini WADI: Smallest Cable Gland							
Part Numbers		Cable Range	Thread Type & Size	Dimensions in Inches (mm)			
-40°F to 212°F (-20°C to 100°C)	-13°F to 392°F (-25°C to 200°C)			A	B	TL	F <sub>1</sub> /F
		Inches (mm)	See page 56 for thread specs	Clearance Hole	Body Length	Thread Length	Wrench Flats
				+ .01" (+.25 mm)			
CD07AW-BR*	-	.08 - .18 (2 - 4.5)	PG 7	.49 (12.5)	.56 (12.5)	.14 (3.5)	.43 (11) / .59 (15)
CD06MW-BR	CD06MW-RV	.08 - .13 (2 - 3.2)	M6 x 1	.25 (6)	.39 (10)	.24 (6)	.31 (8)
CD08MW-BR	CD08MW-RV	.12 - .20 (3 - 5)	M8 x 1.25	.33 (8)	.51 (13)	.24 (6)	.43 (11)
CD10MW-BR	-	.16 - .24 (4 - 6)	M10 x 1.5	.39 (10)	.55 (14)	.24 (6)	.47 (12)


\*CD07AW-BR does not come with an O-Ring.

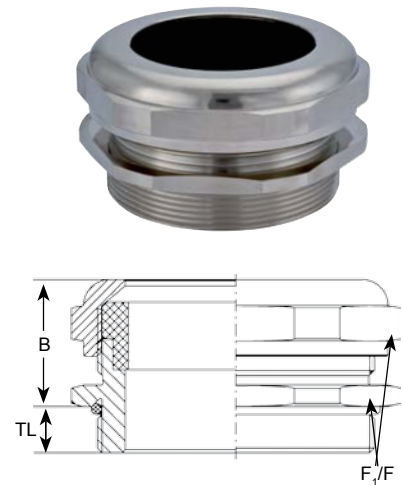
\*CE rating applies to Mini WADI Fittings only.


Also available in Stainless Steel, Elongated & EMI.

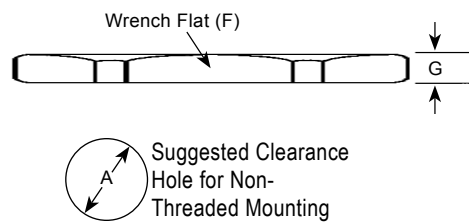


Locking Nuts: for Mini WADI			
Part Numbers	Thread Type & Size	Dimens. Inches (mm)	
		G	F
	See page 56 for thread specs	Thickness	Wrench Flats
NP-07-BR		PG 7	.11 (2.8)
NM-06-BR	M6 x 10	.10 (2.5)	.39 (10)
NM-08-BR	M8 x 1.25	.10 (2.5)	.51 (13)
NM-10-BR	M10 x 1.5	.11 (2.8)	.51 (13)

WADI XL: Largest Cable Glands							
Part Numbers		Cable Range	Thread Type & Size	Dimensions in Inches (mm)			
-40°F to 212°F (-40°C to 100°C)				A	B	TL	F <sub>1</sub> /F
	Buna N	Inches (mm)	See page 56 for thread specs	Clearance Hole	Body Length	Thread Length	Wrench Flats
				+ .01" (+.25 mm)			
CX63MA-BR	1.89 - 2.17 (48-55)	M63 x 1.5	2.48 (63)	1.65 (42)	.39 (10)	2.95 (75)	3.15 (80)
CX75MA-BR	1.89 - 2.17 (48-55)	M75 x 1.5	2.95 (75)	1.65 (42)	.59 (15)	3.15 (80)	3.35 (85)
CX75MB-BR	2.09 - 2.36 (53-60)	M80 x 2	3.15 (80)	1.65 (42)	.59 (15)	3.54 (90)	3.54 (90)
CX80MA-BR	2.28 - 2.56 (58-65)	M80 x 2	3.15 (80)	1.65 (42)	.59 (15)	3.54 (90)	3.54 (90)
CX90MA-BR	2.48 - 2.76 (63-70)	M90 x 2	3.54 (90)	1.65 (42)	.59 (15)	3.94 (100)	3.94 (100)
CX90MB-BR	2.68 - 2.95 (68-75)	M90 x 2	3.54 (90)	1.65 (42)	.59 (15)	3.94 (100)	3.94 (100)
CX10MA-BR	2.87 - 3.15 (73-80)	M100 x 2	3.94 (100)	2.05 (52)	.79 (20)	4.33 (110)	4.33 (110)
CX10MB-BR	3.07 - 3.35 (78-85)	M100 x 2	3.94 (100)	2.05 (52)	.79 (20)	4.33 (110)	4.33 (110)
CX11MA-BR	3.27 - 3.54 (83-90)	M110 x 2	4.33 (110)	2.05 (52)	.79 (20)	4.72 (120)	4.72 (120)



Locking Nuts: for WADI XL			
Part Numbers	Thread Type & Size	Dimens. Inches (mm)	
		G	F
	See page 56 for thread specs	Thickness	Wrench Flats
NM-63-BR		M63 x 1.5	.24 (6)
NM-75-XL	M75 x 1.5	.32 (8)	3.35 (85)
NM-80-XL	M80 x 2	.32 (8)	3.54 (90)
NM-90-XL	M90 x 2	.32 (8)	3.94 (100)
NM-10-XL	M100 x 2	.43 (11)	4.53 (115)
NM-11-XL	M110 x 2	.43 (11)	4.92 (125)



### Typical XL Applications:

- Machine & Apparatus
- Automation
- Railroads
- Ship Building
- Off-shore
- Renewable Energy
- Utilities
- Nuclear Power
- Printing Machines

Silicone or FKM Inserts & O-Rings for WADI XL Fittings are available on request. For inquiries, please call our Inside Technical Sales Department (800) 456-9012 or (303) 699-1135.

Optional Locking Nuts, O-Rings & Other Accessories starting on Page 29 - 40.