


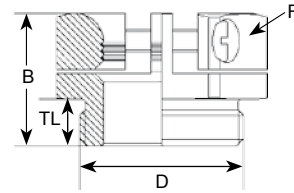
Accessories - Cable Clamp Fitting (Low Profile) Fits Metric Threads



Accessories

Part Numbers	Cable Range	Thread Type & Size	Dimensions in Inches (mm)			
			D	B	TL	F
-140°F to 392°F (-60°C to 200°C)			Hole O.D.	Body Length	Thread Length	Wrench Flat
 Nickel Plated Brass	Inches (mm)	See page 56 for thread specs				
KL12MA-BR	.20 - .30 (5 - 7.5)	M12 x 1.5	.47 (12)	.59 (15)	.22 (5.5)	.63 (16)
KL16MA-BR	.28 - .39 (7 - 10)	M16 x 1.5	.63 (16)	.63 (16)	.24 (6)	.75 (19)
KL20MA-BR	.39 - .55 (10 - 14)	M20 x 1.5	.79 (20)	.71 (18)	.26 (6.5)	.94 (24)
KL25MA-BR	.47 - .85 (12 - 21.5)	M25 x 1.5	.98 (25)	.83 (21)	.31 (8)	1.34 (34)
KL32MA-BR	.63 - 1.06 (16-27)	M32 x 1.5	1.26 (32)	.87 (22)	.31 (8)	1.65 (42)
KL40MA-BR	.87 - 1.30 (22-33)	M40 x 1.5	1.57 (40)	1.00 (25.5)	.37 (9.5)	2.05 (52)


RoHS

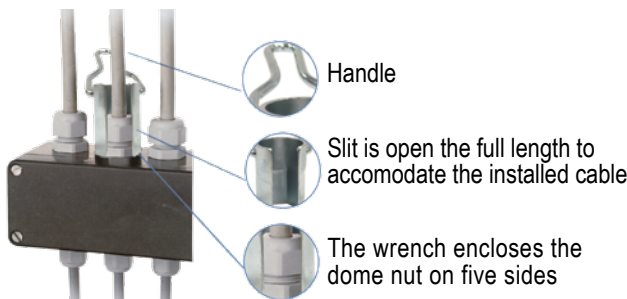


This clamp offers **Extra Pull-out Resistance**. Made of durable Nickel Plated Brass, it offers an excellent solution for your specific application needs. Not a liquid tight solution.

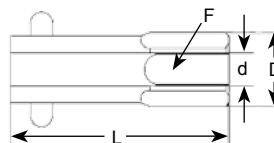
Also available in PG Threads!

Accessories - Deep Socket Wrenches for Strain Relief Fittings

Part Numbers	Used with Sizes		Dimensions in Inches (mm)			
	Nylon Dome Nut	Brass Dome Nut	F	L	d	D
 Socket Wrench	See page 56 for thread specs	See page 56 for thread specs	Wrench Flat	Length	Inner Diameter	Outer Diameter
S-1400-WR	-	PG7, M12	.55 (14)	2.36 (60)	.35 (9)	.75 (19)
S-1500-WR	PG7, M12	-	.59 (15)	2.36 (60)	.37 (9.5)	.79 (20)
S-1700-WR	-	PG 9, 3/8" NPT, M16	.67 (17)	2.36 (60)	.39 (10)	.93 (23.5)
S-1900-WR	PG 9, 3/8" NPT, M16	3/8" NPT, M16	.75 (19)	2.36 (60)	.43 (11)	1.02 (26)
S-2000-WR	-	PG 11, M16-E	.79 (20)	2.36 (60)	.47 (12)	1.06 (27)
S-2200-WR	PG 11, 3/8" NPT, M16-E	PG 13 / 13.5, 1/2" NPT, M20	.87 (22)	2.36 (60)	.51 (13)	1.16 (29.5)
S-2400-WR	PG 13 / 13.5, 1/2" NPT, M20	PG 16, 1/2" NPT-E, M20-E	.94 (24)	2.36 (60)	.59 (15)	1.28 (32.5)
S-2700-WR	PG 16, 1/2" NPT-E, M20-E	-	1.06 (27)	2.36 (60)	.67 (17)	1.40 (35.5)
S-3000-WR	-	PG 21, 3/4" NPT, M25	1.18 (30)	2.36 (60)	.71 (18)	1.59 (40.5)
S-3300-WR	PG 21, 3/4" NPT, M25	-	1.30 (33)	2.36 (60)	.79 (20)	1.71 (43.5)
S-4000-WR	-	PG 29, 1" NPT, M32	1.57 (40)	3.94 (100)	.98 (25)	2.07 (52.5)
S-4100-WR	PG 29	-	1.61 (41)	3.94 (100)	1.06 (27)	2.11 (53.5)
S-4200-WR	PG 29, 1", 1-1/4" NPT, M32	-	1.65 (42)	3.94 (100)	1.06 (27)	2.15 (54.5)
S-4600-WR	1-1/4" NPT	-	1.81 (46)	3.94 (100)	1.22 (31)	2.36 (60)
S-5000-WR	-	PG 36, M40	1.97 (50)	3.94 (100)	1.26 (32)	2.58 (65.5)
S-5300-WR	PG 36, 1-1/2" NPT, M40	-	2.09 (53)	3.94 (100)	1.26 (32)	2.82 (71.5)
S-5500-WR	M 50	M 50	2.17 (55)	3.94 (100)	1.26 (32)	2.83 (72)
S-5700-WR	-	PG 42, M50	2.24 (57)	3.94 (100)	1.42 (36)	2.97 (75.5)
S-6000-WR	PG 42, M50	-	2.36 (60)	3.94 (100)	1.50 (38)	3.09 (78.5)
S-6400-WR	-	PG 48, M63	2.52 (64)	3.94 (100)	1.57 (40)	3.31 (84)
S-6500-WR	PG 48, M63	-	2.56 (65)	3.94 (100)	1.65 (42)	3.35 (85)
S-6800-WR	M63	M63	2.68 (68)	3.94 (100)	1.65 (42)	3.43 (87)



The handy, lightweight **Deep Socket Wrench** is manufactured from alloy steel. It is slit open along the full length to accommodate the installed cable during tightening of the dome nut. The wrench encloses the dome nut on five sides, giving the nut additional rigidity during tightening. This is especially important if a stiff cable is used. Does not work with all Flex Fittings.



For Material Specifications and Approval Information refer to page 52.