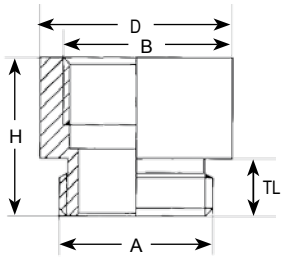
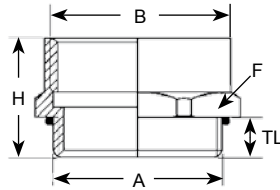


Dealing with foreign products?
Is connecting a challenge?
Well, look no further!



(AF-xxxx-BR & AP-xxxx-BR)



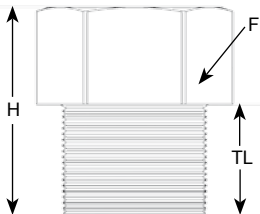
(AG-xxxx-BR & AM-xxxx-BR)

More custom parts available online
at www.SealconUSA.com
or upon request!

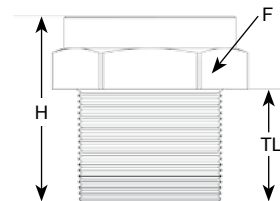
Operating Temperature: -40°F to 212°F (-40°C to 100°C)
(Nickel Plated Brass Adapters with O-Ring):

Thread Adapters: NPT to PG Threads*					
Part Numbers	Threads		Dimensions in Inches (mm)		
	Male Thread A	Female Thread B	F Wrench Flat	TL Thread Length	H Height
AN-1407-BR	1/4" NPT	PG 7	.75 (19)	.59 (15)	.98 (25)
AN-1209-BR	1/2" NPT	PG 9	.98 (25)	.79 (20)	1.18 (30)
AN-1211-BR	1/2" NPT	PG 11	.98 (25)	.79 (20)	1.18 (30)
AN-1213-BR	1/2" NPT	PG 13/13.5	.98 (25)	.79 (20)	1.18 (30)
AN-1221-BR	1/2" NPT	PG 21	1.30 (33)	.79 (20)	1.26 (32)
AN-3421-BR	3/4" NPT	PG 21	1.30 (33)	.67 (17)	1.22 (31)
AN-1029-BR	1" NPT	PG 29	1.61 (41)	.98 (25)	1.57 (40)

*O-Ring not included



(AN-xxxx-BR)





(AT-xxxx-BR)


Thread Adapters: NPT to Metric Threads*					
Part Numbers	Threads		Dimensions in Inches (mm)		
	Male Thread A	Female Thread B	F Wrench Flat	TL Thread Length	H Height
AT-1216-BR	1/2" NPT	M16 x 1.5	.98 (25)	.79 (20)	1.18 (30)
AT-1220-BR	1/2" NPT	M20 x 1.5	.98 (25)	.79 (20)	1.18 (30)
AT-1225-BR	1/2" NPT	M25 x 1.5	1.26 (32)	.79 (20)	1.18 (30)
AT-3425-BR	3/4" NPT	M25 x 1.5	1.24 (31.6)	.75 (19)	1.18 (30)
AT-1032-BR	1" NPT	M32 x 1.5	1.50 (38)	.98 (25)	1.61 (41)
AT-5432-BR	1-1/4" NPT	M32 x 1.5	1.67 (42.5)	.59 (15)	1.30 (33)


*O-Ring not included.

See page 56 for thread specifications.

Thread Adapters: PG to NPT Threads					
Part Numbers	Threads		Dimensions in Inches (mm)		
	Male Thread A	Female Thread B	F Wrench Flat	TL Thread Length	H Height
 Nickel Plated Brass w/ Buna-N O-Ring					
AG-0912-BR*	PG 9	1/2" NPT	.94 (24)	.24 (6)	.94 (24)
AG-1112-BR	PG 11	1/2" NPT	.94 (24)	.24 (6)	.89 (22.7)
AG-1312-BR	PG 13/13.5	1/2" NPT	.94 (24)	.26 (6.5)	.93 (23.5)
AG-1612-BR	PG 16	1/2" NPT	.94 (24)	.26 (6.5)	.91 (23)
AG-2112-BR	PG 21	1/2" NPT	1.18 (30)	.28 (7)	.59 (15)
AG-2134-BR	PG 21	3/4" NPT	1.18 (30)	.28 (7)	.94 (24)
AG-2910-BR	PG 29	1" NPT	1.57 (40)	.31 (8)	.79 (20)

Thread Adapters: PG to Metric Threads*					
Part Numbers	Threads		Dimensions in Inches (mm)		
	Male Thread A	Female Thread B	D Outer Diameter	TL Thread Length	H Height
					
AP-0916-BR	PG 9	M16 x 1.5	.79 (20)	.24 (6)	.65 (16.5)
AP-1120-BR	PG 11	M20 x 1.5	.87 (22)	.26 (6.5)	.75 (19)
AP-1320-BR	PG 13/13.5	M20 x 1.5	.87 (22)	.26 (6.5)	.75 (19)
AP-1625-BR	PG 16	M25 x 1.5	1.06 (27)	.26 (6.5)	.83 (21)

Thread Adapters: Metric to PG Threads*					
Part Numbers	Threads		Dimensions in Inches (mm)		
	Male Thread A	Female Thread B	D Outer Diameter	TL Thread Length	H Height
					
AF-1609-BR	M16 x 1.5	PG 9	.79 (20)	.24 (6)	.65 (16.5)
AF-2011-BR	M20 x 1.5	PG 11	.87 (22)	.26 (6.5)	.75 (19)
AF-2013-BR	M20 x 1.5	PG 13/13.5	.87 (22)	.26 (6.5)	.75 (19)
AF-2016-BR	M20 x 1.5	PG 16	.94 (24)	.26 (6.5)	.75 (19)
AF-2516-BR	M25 x 1.5	PG 16	1.10 (28)	.26 (6.5)	.75 (19)
AF-2521-BR	M25 x 1.5	PG 21	1.18 (30)	.26 (6.5)	.83 (21)
AF-3229-BR	M32 x 1.5	PG 29	1.54 (39)	.28 (7)	.91 (23)

Thread Adapters: Metric to NPT Threads					
Part Numbers	Threads		Dimensions in Inches (mm)		
	Male Thread A	Female Thread B	F Wrench Flat	TL Thread Length	H Height
 Nickel Plated Brass w/ Buna-N O-Ring					
AM-1612-BR	M16 x 1.5	1/2" NPT	.94 (24)	.24 (6)	.91 (23)
AM-2012-BR	M20 x 1.5	1/2" NPT	.94 (24)	.24 (6)	.91 (23)
AM-2512-BR	M25 x 1.5	1/2" NPT	1.18 (30)	.28 (7)	.59 (15)
AM-2534-BR	M25 x 1.5	3/4" NPT	1.18 (30)	.28 (7)	1.07 (26)
AM-3210-BR	M32 x 1.5	1" NPT	1.57 (40)	.31 (8)	1.30 (33)
AM-3254-BR	M32 x 1.5	1-1/4" NPT	1.81 (46)	.31 (8)	1.30 (33)