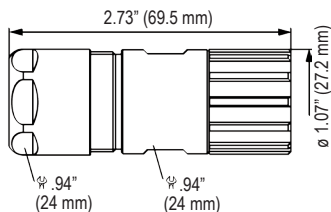


M23 RJ45 CONNECTORS

HOUSINGS

M23 RJ45 Straight Connector, EMI, Female Thread

MUST USE YAMAICHI Y-CON SQUARE PLUG - SEE PAGE 35



Cable-Ø

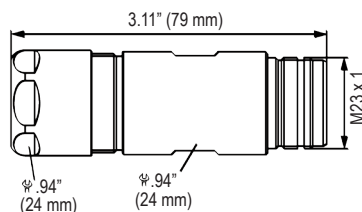
Part Number

3 – 7 mm (.12 – .28").....S7.R10.400.000
Connector with Insert for Patch Cable

Suitable Patch Cable and Plugs can be Recommended.

M23 RJ45 Straight Connector, EMI, Male Thread

FEMALE / FEMALE COUPLER



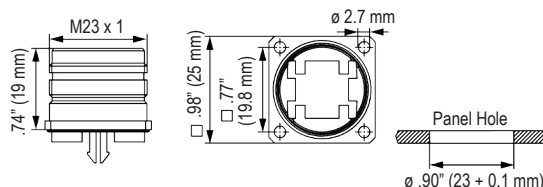
Cable-Ø

Part Number

3 – 7 mm (.12 – .28").....S7.R20.408.000
Includes 8 poles Coupler, Fully Occupied

M23 RJ45 Panel Connector, Male Thread, Dip Solder Insert, Flange

DIP SOLDER INSERT



Type

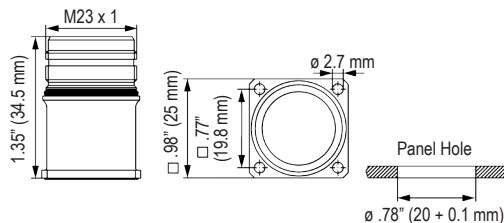
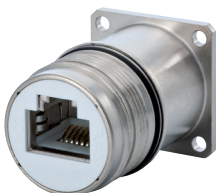
Part Number

Front Mounting, Flange 25 x 25 mm
4 x Holes Ø 2.7 mm.....S7.R40.008.000
Includes 8 poles dip solder insert

4 x Holes Ø 2.7 mm.....S7.R40.082.000
Includes 8 + 2 poles Dip Solder Insert

M23 RJ45 Panel Connector, Male Thread, Flange

FEMALE/FEMALE COUPLER



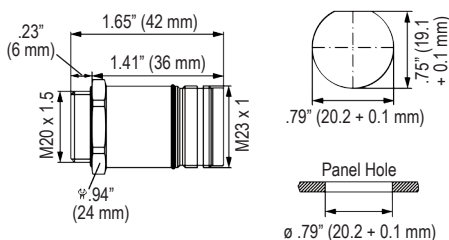
Type

Part Number

Front Mounting, Flange 25 x 25 mm
4 x Holes Ø 2.7 mm,.....S7.R41.008.000
Includes 8 poles coupler, Fully Occupied

M23 RJ45 Panel Connector, Single Hole, Male Thread

FEMALE/FEMALE COUPLER



Type

Part Number

Front Mounting, Single Hole
M20 x 1.5 threadS7.R42.008.000
Includes 8 poles Coupler, Fully Occupied

Optional: Gasket M20 x 1.5, Locking Nut