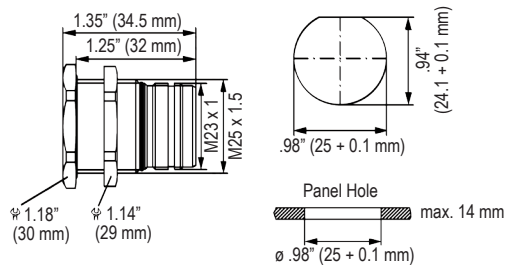
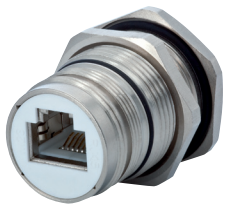


# M23 RJ45 CONNECTORS

## HOUSINGS

### M23 RJ45 Panel Connector, Single Hole, Male Thread

FEMALE/FEMALE COUPLER



Type

Part Number

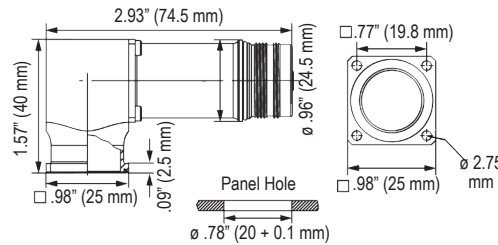
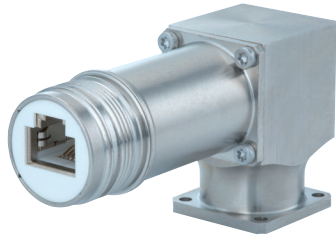
Rear Mounting, Single Hole

M25 x 1.5 thread .....S7.R50.008.000  
Includes 8 poles Coupler, Fully Occupied

Including Locking Nut M25 x 1.5

### M23 RJ45 Right Angle Panel Connector, Male Thread, Rotatable 300°

FEMALE/FEMALE COUPLER



Type

Part Number

300° Rotatable, Flange 25 x 25 mm

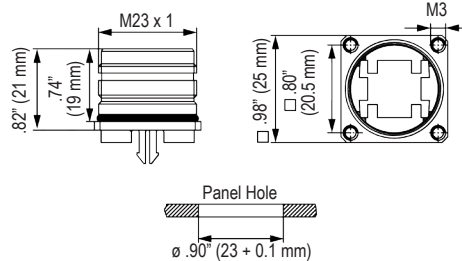
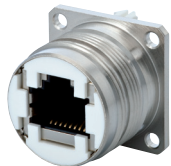
4 x Holes Ø 2.7 mm.....S7.R43.108.000  
Includes 8 poles Coupler, Fully Occupied

Optional: Flat Gasket....STAD1-7P2510

Easy Fastening with:  
M2.5 x 10 mm Screws

### M23 RJ45 Panel Connector, Male Thread, Dip Solder Insert, Flange

DIP SOLDER INSERT



Type

Part Number

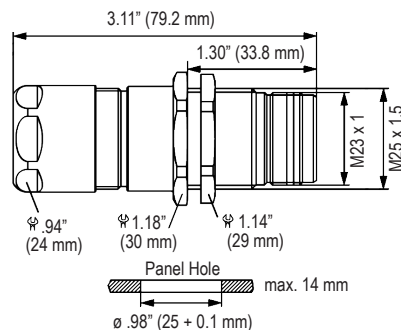
Rear Mounting, Flange 25 x 25 mm

4 x Threaded M3.....S7.R45.008.000  
Includes 8 poles Dip Solder Insert

4 x Threaded M3.....S7.R45.082.000  
Includes 8 + 2 poles Dip Solder Insert

### M23 RJ45 Panel Connector w/ Strain Relief, EMI, Single Hole, Male Thread

FEMALE/FEMALE COUPLER



Cable-Ø

Part Number

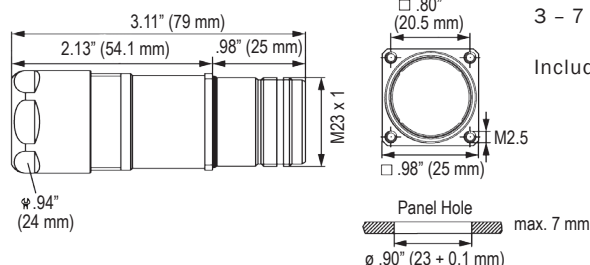
Rear Mounting, Thread M25 x 1.5, Single Hole

3 - 7 mm (.12 - .28").....S7.R52.408.000

Includes 8 poles Coupler, Fully Occupied  
Including Locking Nut M25 x 1.5

### M23 RJ45 Panel Connector with Strain Relief, EMI, Male Thread

FEMALE/FEMALE COUPLER



Cable-Ø

Part Number

Rear Mounting, 4 x Threaded M2.5, Flange 25 x 25 mm

3 - 7 mm (.12 - .28").....S7.R47.408.000

Includes 8 poles Coupler, Fully Occupied