


# M23 SIGNAL CONNECTORS

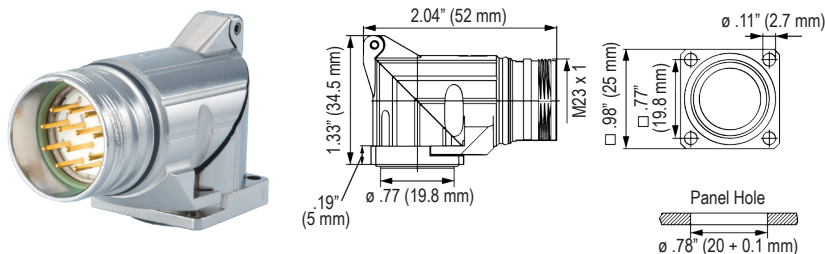
## HOUSINGS

### M23 Signal Right Angle Panel Connector, Male Thread, Fixed Flange

Type Part Number


Fixed Mounting, Flange 25 x 25 mm  
 4 x Holes Ø 2.7 mm.....  S7.435.000.000  
 Optional: Flat gasket....STAD1-7P2510

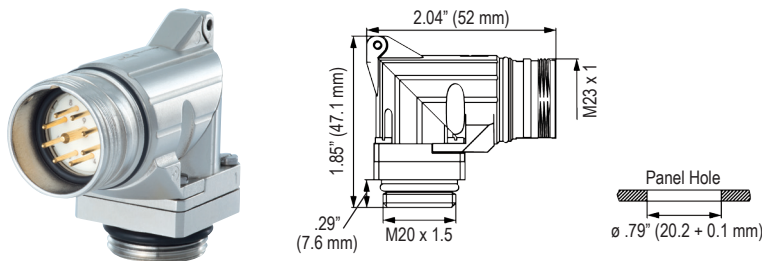
Easy Fastening with:  
 M2.5 x 10 mm Screws



### M23 Signal Right Angle Panel Connector, Male Thread, Rotatable 335°

Type Part Number

335° Rotatable, Hole Mounted  
 Thread M20 x 1.5.....  S7.431.000.000

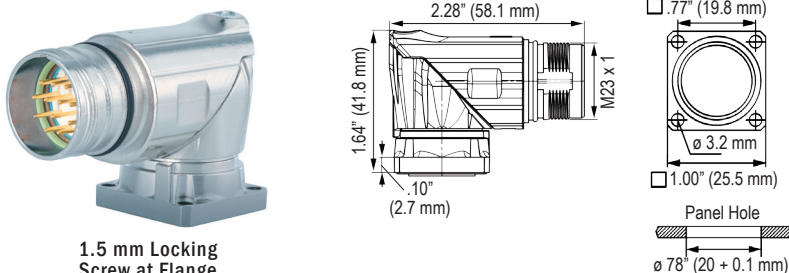


### M23 Right Angle Panel Connector, Male Thread, Rotatable 330° Standard Threaded and TWILOCK/TWILOCK-S\* - Quick Connect

Type Part Number

330° Rotatable, Flange 25 x 25 mm  
 4 x Holes Ø 3.2 mm.....  S7.439.000.000  
 Optional: Flat gasket....STAD1-7P2510

\*Intermable with SpeedTEC® (Twilock-S)  
 4 x Holes Ø 3.2 mm.....  S7.439.000.00S  
 Optional: Flat gasket....STAD1-7P2510

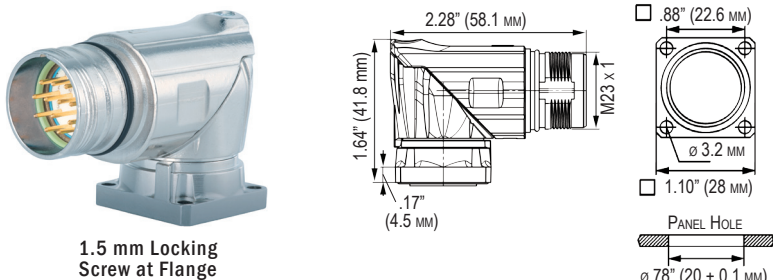


### M23 Right Angle Panel Connector, Male Thread, Rotatable 330° Standard Threaded and TWILOCK/TWILOCK-S\* - Quick Connect

Type Part Number


330° Rotatable, Flange 28 x 28 mm  
 4 x Holes Ø 3.2 mm.....  S7.439.100.000


\*Intermable with SpeedTEC® (Twilock-S)  
 4 x Holes Ø 3.2 mm.....  S7.439.100.00S

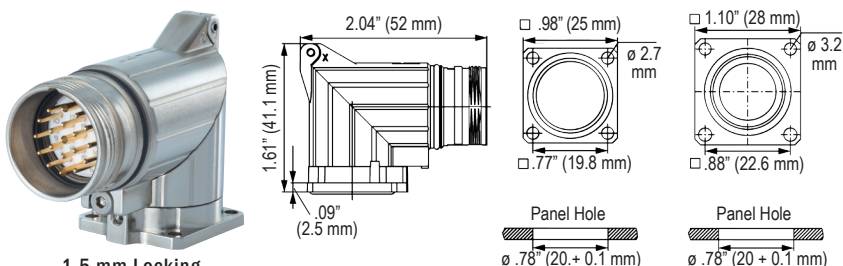


### M23 Right Angle Panel Connector, Male Thread, Rotatable 300°

Type Part Number

300° Rotatable, 4 x Holes Ø 2.7 mm, Flange  
 Flange 25 x 25 mm.....  S7.433.000.000  
 Optional: Flat gasket....STAD1-7P2510

300° Rotatable, 4 x Holes Ø 3.2 mm, Flange  
 Flange 28 x 28 mm.....  S7.433.100.000



 MATES WITH TWILOCK SYSTEM      DOES NOT MATE WITH TWILOCK SYSTEM