


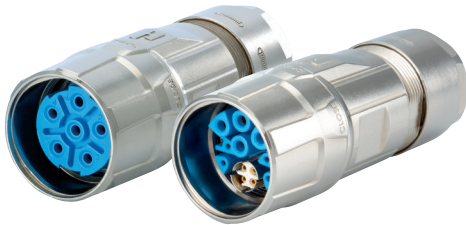
M23 POWER, M23 HYBRID CONNECTORS

HIGH POWER AND MULTIPLE OPTIONS

The M23 Power connector is diverse with many pin-out configurations and housing styles. Connection styles include standard Threaded screw lock, Twilock and Twilock-S 1/4 turn system, which mates to SpeedTEC® by Intercontec/ TE Connectivity. EMI ready options! Available in 6, 8, 9, 10 or 12 pole inserts with power transmission up to 600 Volts and 28 Amps as well as a Hybrid Insert.

Mechanical Data	Materials and Technical Data
Housing	Copper-Zinc alloy, Die Cast
Housing surface	Nickel plated Other surface upon request
Inserts	Thermoplastic Polyamid PA 6 (Nylon 6/6), PBT Fire protection class V-0
Contacts	Brass Alloy
Contact surface at point of contact	Nickel and gold plated (0.25 µm)
Minimum mating cycles	> 1000 (Sealcon to Sealcon connector)
Seals / O-Rings	Buna-N (Black), Optional FKM (Green)
Temperature range	-40 °F - 257 °F (-40 °C - 125 °C)
Type of contacts	Crimp
Protection	IP 67 / IP 69K per EN 60 529 (connected), NEMA 4x
Cable diameter range	.28 - .67" (7 - 17 mm)

 HYBRID INSERT AVAILABLE ON PAGE 56. INSERT FITS STANDARD M23 POWER SHELL.

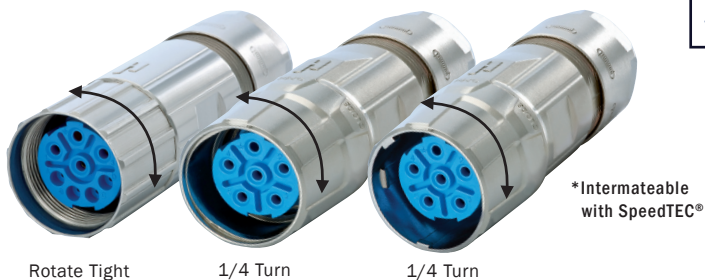


CONNECTION SYSTEM TYPES

THREADED

TWILOCK

TWILOCK-S*



*Intermateable with SpeedTEC®

Components Needed For A Complete M23 Power Connector:

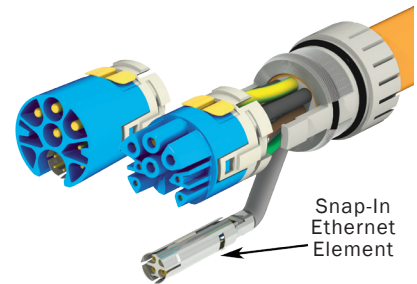
- HOUSING (pages 51 - 54)
- INSERT (page 56)
- CONTACTS (page 56)

HYBRID INSERT

HYPERFACE
DSL & EnDat 2.2

Allowing Data Transfer up to 500 Mbit/s

< Cat 5e



Electrical Data

Number of positions	5 + PE	4 + 3 + PE		5 + 3 + PE		10
Number of contacts	6	4	4	5	4	10
Contact-Ø [mm]	2	1	2	1	2	1
Nominal current [A]	28	8	28	10	28	10
Nominal voltage [V~] degree of protection 3	600	300	600	250	600	160
Test voltage (Breakdown voltage) [V~]	4000	2500	4000	2500	4000	2500
Insulation resistance [MΩ]	> 10 ¹³	> 10 ¹³		> 10 ¹³		> 10 ¹³
Max. contact resistance [mΩ]	3	3		3	3	3

M23 Hybrid Electrical Data

Number of positions	4 + 4 + 3 + PE		
	POWER	SIGNAL	ETHERNET
Number of contacts	4	4	4
Contact-Ø [mm]	2	1	0.6
[mm ²] (AWG)	0.75 - 4 (18 - 12)	0.14 - 1 (26 - 17)	0.08 - 0.34 (28 - 22)
Nominal current [A]	28	8	2
Nominal voltage [V~] degree of protection 3	600	300	60
Test voltage (Breakdown voltage) [V~]	4000	2500	500
Insulation resistance [MΩ]	> 10 ¹³	> 10 ¹⁰	> 10 ⁶
Max. contact resistance [mΩ]	< 3	< 3	< 3
Hybrid Connector Ethernet Capabilities			5e

SEE TECHNICAL INFORMATION ON PAGE 80

*ASSEMBLY INSTRUCTIONS CAN BE FOUND AT WWW.SEALCONUSA.COM OR BY CALLING US AT 1-800-456-9012