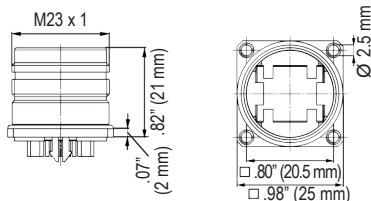


# M23 RJ45 ETHERNET CONNECTORS FOR HAZLOC

## Ex-i RJ45 ETHERNET CONNECTORS

### M23 Rj45 Ex-i Panel Connector, Dip Solder Insert, Flange

NICKEL PLATED BRASS



Type

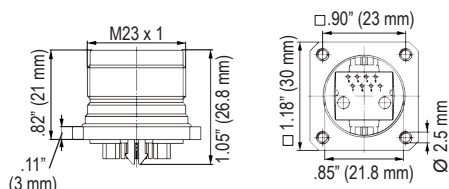
Part Number

Rear Mounting, Flange 25 x 25 mm  
4 x Holes 2.5 mm.....S7.R45.008.700

Includes 8 pole Dip Solder Insert

### M23 Rj45 Ex-i Panel Connector, Dip Solder Insert, Flange

STAINLESS STEEL 316L



Type

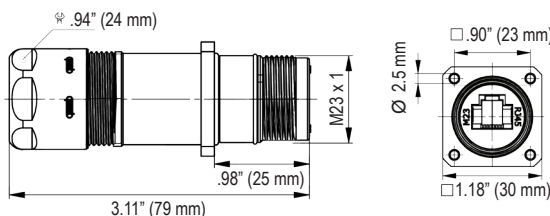
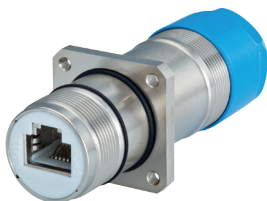
Part Number

Rear Mounting, Flange 30 x 30 mm  
4 x Holes 2.5 mm.....S7.R45.008.740

Includes 8 pole Dip Solder Insert

### M23 Rj45 Ex-i Panel Connector with Cable Gland, EMI, Flange

NICKEL PLATED BRASS



Cable-Ø

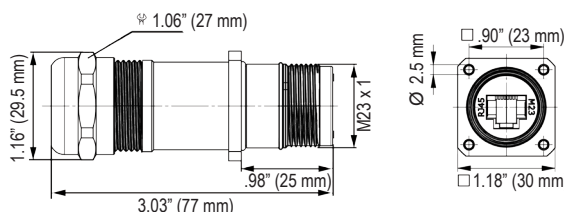
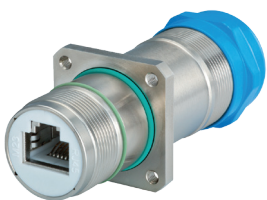
Part Number

Rear Mounting, 4 x Holes 2.5 mm, Flange 30 x 30 mm  
16" - .28" (4 - 7 mm).....S7.R47.408.700

Includes 8 pole Coupler

### M23 Rj45 Ex-i Panel Connector w/ Cable Gland, EMI, Male Thread, Flange

STAINLESS STEEL 316L



Cable-Ø

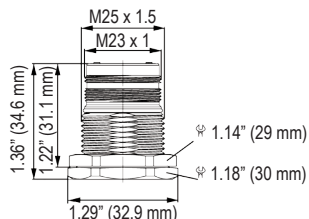
Part Number

Rear Mounting, 4 x Holes 2.5 mm, Flange 30 x 30 mm  
.16" - .28" (4 - 7 mm).....S7.R47.408.740

Includes 8 pole Coupler

### M23 Rj45 Ex-i Panel Connector, Single Hole, Male Thread

NICKEL PLATED BRASS



Type

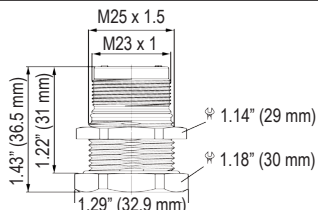
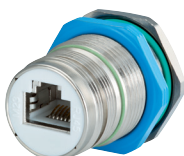
Part Number

Rear Mounting, Single Hole  
Thread M25 x 1.5.....S7.R50.008.700

Includes 8 poles Couple & Hex Locking Nut M25 x 1.5

### M23 Rj45 Ex-i Panel Connector, Single Hole, Male Thread

STAINLESS STEEL 316L



Type

Part Number

Rear Mounting, Single Hole  
Thread M25 x 1.5.....S7.R50.008.740

Includes 8 poles Couple & Hex Locking Nut M25 x 1.5



HOUSING ONLY. FIELD ATTACHABLE RJ45 CONNECTORS NOT INCLUDED. MORE INFORMATION CAN BE FOUND AT [WWW.SEALCONUSA.COM](http://WWW.SEALCONUSA.COM) OR BY CALLING US AT 1-800-456-9012