
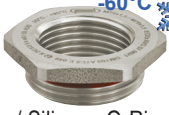
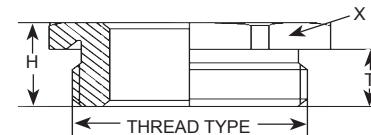
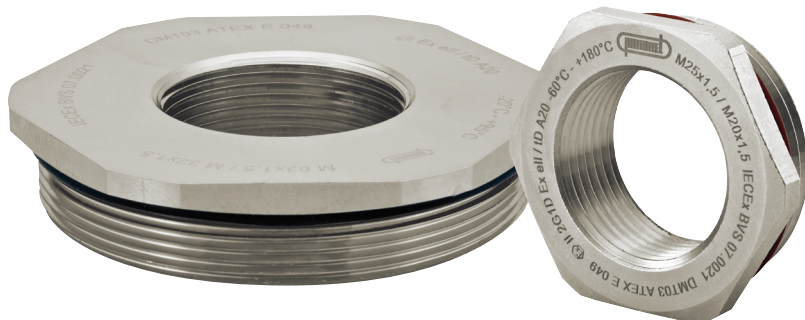


Thread Reducers: Nickel Plated Brass - Metric & PG Threads, IP 68/69K, 150 PSIG, 10 BAR

Part Numbers		Thread Type & Size		Dimensions in Inches (mm)		
-4°F to 203°F (-20°C to 95°C)	-76°F to 356°F (-60°C to 180°C)	Male Thread A	Female Thread B	H	T	X
	 -60°C	Page 59 for Thread Specs	Page 59 for Thread Specs	Overall Height	Thread Length	Wrench Flat
w/ Buna-N O-Ring	w/ Silicone O-Ring					
RM-1612-MX	RM-1612-MX-S	M16 x 1.5	M12 x 1.5	.31" (8)	.20" (5)	.67" (17)
RM-2012-MX	RM-2012-MX-S	M20 x 1.5	M12 x 1.5	.35" (9)	.24" (6)	.87" (22)
RM-2016-MX	RM-2016-MX-S	M20 x 1.5	M16 x 1.5	.35" (9)	.24" (6)	.87" (22)
RM-2516-MX	RM-2516-MX-S	M25 x 1.5	M16 x 1.5	.39" (10)	.28" (7)	1.14" (29)
RM-2520-MX	RM-2520-MX-S	M25 x 1.5	M20 x 1.5	.39" (10)	.28" (7)	1.14" (29)
RM-3216-MX	RM-3216-MX-S	M32 x 1.5	M16 x 1.5	.43" (11)	.31" (8)	1.34" (34)
RM-3220-MX	RM-3220-MX-S	M32 x 1.5	M20 x 1.5	.43" (11)	.31" (8)	1.34" (34)
RM-3225-MX	RM-3225-MX-S	M32 x 1.5	M25 x 1.5	.43" (11)	.31" (8)	1.34" (34)
RM-4020-MX	RM-4020-MX-S	M40 x 1.5	M20 x 1.5	.47" (12)	.31" (8)	1.69" (43)
RM-4025-MX	RM-4025-MX-S	M40 x 1.5	M25 x 1.5	.47" (12)	.31" (8)	1.69" (43)
RM-4032-MX	RM-4032-MX-S	M40 x 1.5	M32 x 1.5	.47" (12)	.31" (8)	1.69" (43)
RM-5025-MX	RM-5025-MX-S	M50 x 1.5	M25 x 1.5	.51" (13)	.35" (9)	2.17" (55)
RM-5032-MX	RM-5032-MX-S	M50 x 1.5	M32 x 1.5	.51" (13)	.35" (9)	2.17" (55)
RM-5040-MX	RM-5040-MX-S	M50 x 1.5	M40 x 1.5	.51" (13)	.35" (9)	2.17" (55)
RM-6332-MX	RM-6332-MX-S	M63 x 1.5	M32 x 1.5	.55" (14)	.39" (10)	2.56" (65)
RM-6340-MX	RM-6340-MX-S	M63 x 1.5	M40 x 1.5	.55" (14)	.39" (10)	2.56" (65)
RM-6350-MX	RM-6350-MX-S	M63 x 1.5	M50 x 1.5	.55" (14)	.39" (10)	2.56" (65)
RQ-0907-MX	RQ-0907-MX-S	PG 9	PG 7	.35" (8.8)	.24" (6)	.67" (17)
RQ-1107-MX	RQ-1107-MX-S	PG 11	PG 7	.35" (9)	.24" (6)	.79" (20)
RQ-1109-MX	RQ-1109-MX-S	PG 11	PG 9	.35" (9)	.24" (6)	.79" (20)
RQ-1309-MX	RQ-1309-MX-S	PG13	PG 9	.37" (9.5)	.26" (6.5)	.87" (22)
RQ-1609-MX	RQ-1609-MX-S	PG 16	PG 9	.37" (9.5)	.26" (6.5)	.94" (24)
RQ-1611-MX	RQ-1611-MX-S	PG 16	PG 11	.37" (9.5)	.26" (6.5)	.94" (24)
RQ-1613-MX	RQ-1613-MX-S	PG 16	PG 13	.37" (9.5)	.26" (6.5)	.94" (24)
RQ-2111-MX	RQ-2111-MX-S	PG 21	PG 11	.41" (10.3)	.28" (7)	1.18" (30)
RQ-2113-MX	RQ-2113-MX-S	PG 21	PG 13	.41" (10.3)	.28" (7)	1.18" (30)
RQ-2116-MX	RQ-2116-MX-S	PG 21	PG 16	.41" (10.3)	.28" (7)	1.18" (30)
RQ-2916-MX	RQ-2916-MX-S	PG 29	PG 16	.45" (11.5)	.31" (8)	1.57" (40)
RQ-2921-MX	RQ-2921-MX-S	PG 29	PG 21	.45" (11.5)	.31" (8)	1.57" (40)
RQ-3621-MX	RQ-3621-MX-S	PG 36	PG 21	.49" (12.5)	.35" (9)	1.97" (50)
RQ-3629-MX	RQ-3629-MX-S	PG 36	PG 29	.49" (12.5)	.35" (9)	1.97" (50)
RQ-4229-MX	RQ-4229-MX-S	PG 42	PG 29	.53" (13.5)	.39" (10)	2.24" (57)
RQ-4236-MX	RQ-4236-MX-S	PG 42	PG 36	.53" (13.5)	.39" (10)	2.24" (57)
RQ-4836-MX	RQ-4836-MX-S	PG 48	PG 36	.53" (13.5)	.39" (10)	2.52" (64)
RQ-4842-MX	RQ-4842-MX-S	PG 48	PG 42	.53" (13.5)	.39" (10)	2.52" (64)



NPT Threads & Additional Sizes Available Upon Request!

Silicone version accommodates **-60°C** Temperature

Ex-d EXIOS Cable Glands
Ex-d Nickel Plated Brass & Stainless Steel Glands
Nylon Glands
Ex-e
Ex-e Multi-Hole & Romex Glands
Ex-e Nickel Plated Brass & Stainless Steel Glands
Ex-e EMI / RFI Nickel Plated Brass Glands
Ex-e / Ex-d Accessories
Technical Information