

Accessories

**Cable clamps / Caps / Gaskets and seals / Housings for panel connectors / Screws and nuts /
Ground kit / Couplings / Spare parts / Compound / Sleeves / End fittings /
Threaded adaptors for connectors / Blanking plate kit / Cable glands / Union nuts / Contacts**



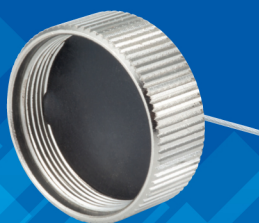
Cable clamps



Cable clamp

Cable clamps are used to hold the cable in place and avoid traction on the wire / contacts connections.

Caps



Protective caps for panel-con. Protective caps for cable-con. Protective caps for coupler connector

Protective caps are designed to prevent foreign substances entering when the cable connector, coupler connector or panel connector are disconnected from each other.

Gaskets and seals



Flat-Gasket for panel connector Cable connector seal

Seals are essential accessories to improve the tightness of our connectors.

Housings for panel connectors



Housing for panel connector Threaded adaptors

The housing is designed to protect the rear of the panel connector. It provides sealing and mechanical protection for the wires and contacts. Some housings provide 360° shielding continuity.

Screws and nuts



Screws and nuts

These screws and nuts are used to attach the panel connectors to the supporting walls.

Grounding kit



Grounding kit for housing

For housings for the Standard, Rapid, Miniature, Industrial and Robotic Series.

Spare parts



Spare parts for circular panel connectors

Couplings



Couplings for bare flexible hoses Couplings for covered flexible hoses

These couplings allow the attachment to one or more outlets of the housing of standardised flexible hoses (according to standards NF C68 100 and NF C68 161).

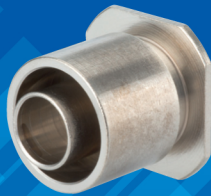
Sleeves



Sleeves

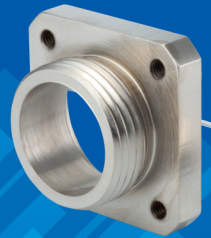
For B1 to B2 rectangular housings for the Standard, Rapid, Miniature, Industrial and Robotic Series.

End fittings



End fittings for soldering
Pg and ISO threaded end fittings
Crimp end fittings
End fittings for pyrometer tubes

Threaded adaptors for connectors



Threaded adaptors for connectors

For panel connectors in the Standard, Rapid and Waterproof Series.

Blanking plate kit



Blanking plate kit

Blanking plate kit for the Standard, Rapid, Waterproof, Miniature, Industrial, Marine, Neptunox and Robotic Series.

Compound



Compound

Compound to coat the connections of all the Series.

Long cable gland



Long cable gland
Short cable gland

Cable glands avoid traction on the wire / contact connections and improve the tightness of the connector.

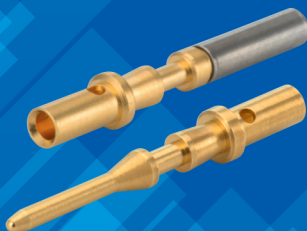
Union nut



Union nut

Couplings reduce traction on the wire / contact connections and improve the tightness of the connector.

Contacts



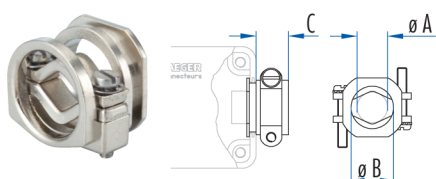
Replacement contacts

Our contacts are designed to replace those in our connectors with removable contacts.

Cable clamps for the Standard, Rapid, Miniature, Industrial and Industrial High-Performance Series

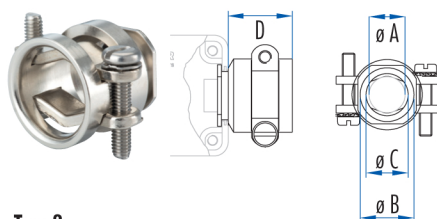
To support the cable, **cable connectors** and **coupler connectors** must be fitted with a connection accessory suitable for the diameter of the cable. Cable clamps support the cable and therefore avoid unnecessary and hazardous traction on the wire / contact connections. They are composed of a brass or light alloy barrel and two flanges assembled by two screws locked by toothed washers.

These elements are protected by a nickel or olive-green cadmium coating. The cable clamps are held tightly together between the two shells of the cable connector or coupler connector housing or the housing of the panel connector for rectangular connectors, or are screwed at the rear of the body of the cable connector or coupler connector for circular connectors.



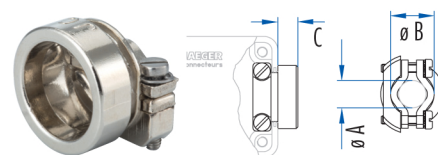
Type 1

Housing	Part Number	Type 1 – Dimensions mm		
		ø A min.	ø B max.	C
1	532 900 006	3	9	8,5
1	532 894 006	7,5	9	11,5
2	532 960 006	7	13	10,2
3-4	532 940 006	12	18	13
5	630 171 006	15	23	14,7



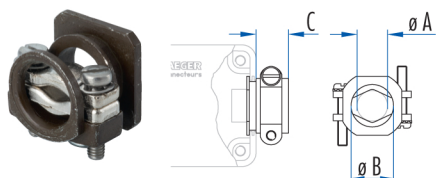
Type 2

Housing	Part Number	Type 2 – Dimensions mm			
		ø A min.	ø B max.	ø C max.	D
1	532 328 006	8,2	13	9	17,1
2	532 329 006	11,8	18	13	20,1
3-4	532 350 006	14,8	23	18	24



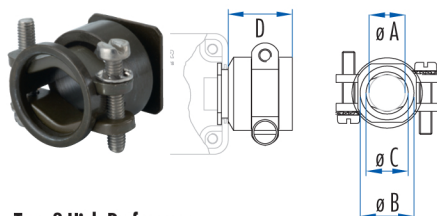
Type 3

Housing	Part Number	Type 3 – Dimensions mm		
		ø A min.	ø B max.	C
1	630 135 006	3	9	5
2	630 138 006	7	13	6
3-4	630 155 006	10	18	7
5	630 175 006	10	23	10



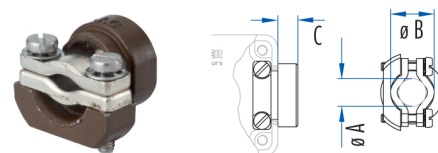
Type 1 High-Performance

Housing	Part Number*	Type 1 – Dimensions mm		
		ø A min.	ø B max.	C
1	532 900 256	3	9	12,3
2	532 960 256	7	13	13



Type 2 High-Performance

Housing	Part Number*	Type 2 – Dimensions mm			
		ø A min.	ø B max.	ø C max.	D
1	532 328 256	8,2	13	9	17,1
2	532 329 256	11,8	18	13	20,1



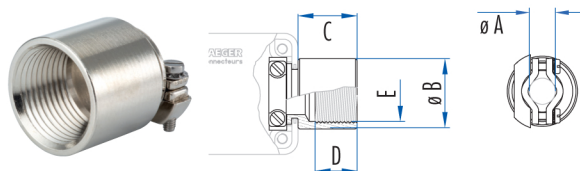
Type 3 High-Performance

Housing	Part Number*	Type 3 – Dimensions mm		
		ø A min.	ø B max.	C
1	630 135 256	3	9	5
2	630 138 256	7	13	6

* olive-green cadmium coating, no RoHS

* olive-green cadmium coating, no RoHS

* olive-green cadmium coating, no RoHS



Pg end fitting with cable clamps

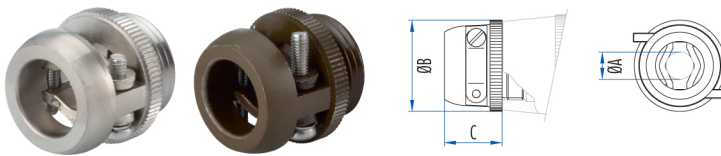
Housing	Part Number	Dimensions mm					
		ø A max.	ø A min.	ø B	C	D	E (Pg)
1	536 821 006	9	3	18	18,5	13	9
1	536 822 006	13	7	22	18,5	13	11
3-4	536 823 006	18	10	26	22	17	16

RoHS

Cable clamps for the Waterproof Series

To support the cable, **cable connectors** and **coupler connectors** must be fitted with a connection accessory suitable for the diameter of the cable. Cable clamps support the cable and therefore avoid unnecessary and hazardous traction on the wire / contact connections. They are composed of a brass or light alloy barrel and two flanges assembled by two screws locked by toothed washers.

These elements are protected by a nickel or olive-green cadmium coating. The cable clamps are screwed at the rear of the body of the cable connector or the coupler connector.



Housing	Nickel-plated	Part Number*	Capacity of the cable clamp		Dimensions mm		
			ø A min.	ø A max.	ø B	C	Pg
1	633 421 006	633 421 256	7,5	12	23	16	11
2	633 422 006	633 422 256	10	17	30	19	16
3	633 423 006	633 423 256	15,5	23	39	28	21
4		633 424 256	15,8	24	48	28	29
5		633 425 256	19	32	56	34	36

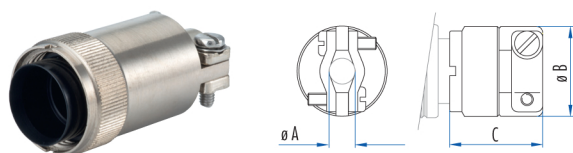
* olive-green cadmium coating, no RoHS

RoHS

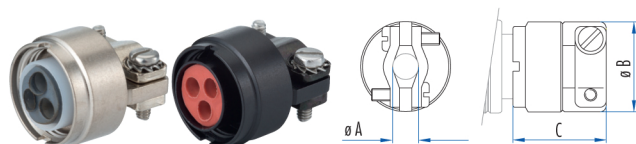
Cable clamps for the Miniature Push-Pull Series

To support the cable and ensure it is watertight, **cable connectors** and **coupler connectors** must be fitted with a connection accessory suitable for the diameter of the cable. Cable clamps support the cable and therefore avoid unnecessary and hazardous traction on the wire / contact connections. They are composed of a brass or light alloy barrel and two flanges assembled by two screws locked by toothed

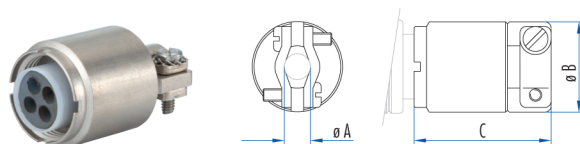
washers. These elements are protected by a nickel coating or black anodising. The cable clamps are screwed at the rear of the body of the cable connector or the coupler connector.



Housing	Part Number	Dimensions mm			
		Ø A min.	Ø A max.	Ø B	C
00	769 607 006	3,5	6	14,5	25
0	769 619 006	6	9	17,5	31,5
1	769 627 006	7	10	23,5	32,4



Housing	Contacts	Part Number Standard	Part Number Cable Gland HP	Dimensions mm			
				Ø A min.	Ø A max.	Ø B	C
00	3	530 331 006	530 692 006	4,5	6	14	15
00	4	530 841 006	530 844 006	4,5	6	14	15
0		530 371 006	530 693 006	5	8,5	18	16
1		769 627 006		7	10	23,5	32,4
1		769 628 006		5	8,5	23,5	32,4



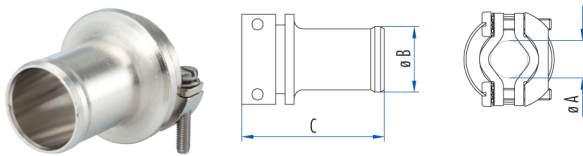
Housing	Contacts	Part Number Long Cable Gland	Dimensions mm			
			Ø A min.	Ø A max.	Ø B	C
00	3	530 337 006	4,5	6	14	22
00	4	530 847 006	4,5	6	14	22
0		530 377 006	5	8,5	18	23

RoHS

Cable clamps for the Robotic Series

To support the cable, **cable connectors** and **coupler connectors** must be fitted with a connection accessory suitable for the diameter of the cable. Cable clamps support the cable and therefore avoid unnecessary and hazardous traction on the wire / contact connections. They are composed of a brass or light alloy barrel and two flanges assembled by two screws locked by toothed washers.

These elements are protected by a nickel coating. The cable clamps are held tightly together between the two shells of the cable connector or coupler connector housing or the housing of the panel connector.



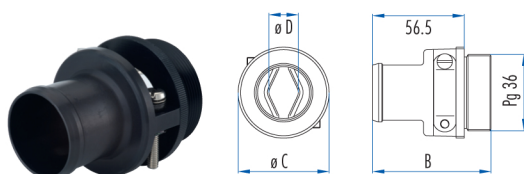
Housing	Part Number	Dimension mm			
		ø A min.	ø A max.	ø B	C
1	530 110 006	2,3	8	11	26,5
1	530 115 006	7	11,5	14,5	31,6
2	530 145 006	10	15,4	18,5	36,7

RoHS

Cable clamps for the Power Series Puissance

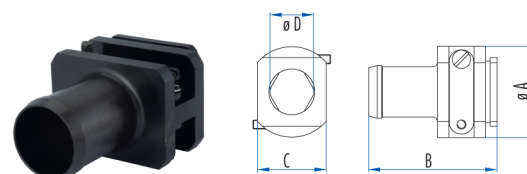
To support the cable, **cable connectors** and **coupler connectors** must be fitted with a connection accessory suitable for the diameter of the cable. Cable clamps support the cable and therefore avoid unnecessary and hazardous traction on the wire / contact connections. They are composed of a brass or light alloy barrel and two flanges assembled by two screws locked by toothed washers.

These elements are protected by a nickel coating or black anodising. The cable clamps are held tightly together between the two shells of the cable connector or coupler connector housing or the housing of the panel connector for rectangular connectors, or are screwed at the rear of the body of the cable connector or coupler connector for circular connectors.



Cable clamp for circular housing

Housing	Part Number	Dimensions mm			
		B	ø C	ø D min.	ø D max.
5	809 605 006	73	56	20	32
5	803 625 006	73	56	20	25



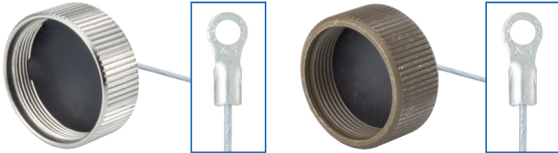
Cable clamp for rectangular housing

Housing	Part Number	Dimensions mm				
		ø A	B	ø C	ø D min.	ø D max.
5	839 603 006	40	56	30	15	20
5	839 604 006	40	56	30	15	23
5	839 605 006	40	56	30	17	28

RoHS

Protective caps for the Standard, Rapid, Waterproof, Hermetic Series

Protective caps are designed to prevent foreign substances entering and to ensure the contacts in the Waterproof Series are sealed when the cable connector, coupler connector or panel connector are disconnected from each other.



Protective caps for male / female panel connector – metal

Housing	Standard Series	Rapid Series	Waterproof Series	Waterproof HP* Series	Waterproof Pg outlet Series	Hermetic Series
1	536 910 006	536 910 006	536 910 006	536 910 256	536 910 006	536 910 006
2	536 911 006	536 911 006	536 911 006	536 911 256	536 911 006	536 911 006
3	536 912 006	536 846 006	536 912 006	536 912 256	536 912 006	536 912 006
4	536 913 006		536 913 006	536 913 256		536 913 006
5	536 914 006		536 914 006	539 914 256		536 914 006

* olive-green cadmium coating, no RoHS



Protective caps for male / female panel connector – plastic

Housing	Standard Series	Rapid Series	Waterproof Series	Waterproof HP Series	Waterproof Pg outlet Series	Hermetic Series
1	536 847 006	536 847 006	536 847 006		536 847 006	536 847 006
2	536 848 006	536 848 006	536 848 006		536 848 006	536 848 006

Does not provide a watertight seal

RoHS

Protective caps for the Standard, Rapid, Waterproof, Hermetic Series

Protective caps are designed to prevent foreign substances entering and to ensure the contacts in the Waterproof Series are sealed when the cable connector, coupler connector or panel connector are disconnected from each other.



Standard – Rapid Series

Waterproof Series, HP (High-Performance), PG outlet

Protective caps for female cable connector – metal

Housing	Standard Series	Rapid Series	Waterproof Series	Waterproof HP* Series	Waterproof Pg outlet Series
1	532 260 006	532 260 006	532 270 006	532 270 256	532 270 006
2	532 278 006	532 278 006	532 271 006	532 271 256	532 271 006
3	532 262 006	532 218 006	532 262 206	532 262 256	532 262 206
4	532 268 006		532 268 206	532 268 256	532 268 206
5	532 269 006		532 269 206	532 269 256	532 269 206

* no RoHS



Standard Series – Rapid

Waterproof Series, HP (High-Performance), PG outlet

Protective caps for male cable connector – metal

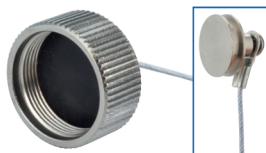
Housing	Standard Series	Rapid Series	Waterproof Series	Waterproof HP* Series	Waterproof Pg outlet Series
1	532 265 006	532 265 006	532 280 006	532 280 256	532 280 006
2	532 279 006	532 279 006	532 281 006	532 281 256	532 281 006
3	532 262 006	532 218 006	532 262 206	532 262 256	532 262 206
4	532 268 006		532 268 206	532 268 256	532 268 206
5	532 269 006		532 269 206	532 269 256	532 269 206

* no RoHS

RoHS

Protective caps for the Standard, Rapid, Waterproof Series

Protective caps are designed to prevent foreign substances entering and to ensure the contacts in the Waterproof Series are sealed when the cable connector, coupler connector or panel connector are disconnected from each other.



Protective caps for male / female – metal coupler connector

Housing	Standard – Rapid Series
1	536 910 606



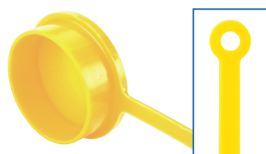
Protective caps for male / female – metal coupler connector

Housing	Waterproof – Waterproof Pg outlet Series
1	536 910 756

RoHS

Protective caps for Miniature, Industrial, Waterproof Miniature, Industrial Waterproof and Industrial High-Performance Series

Protective caps are designed to prevent foreign substances entering and to ensure the contacts in the Waterproof Series are sealed when the cable connector, coupler connector or panel connector are disconnected from each other.



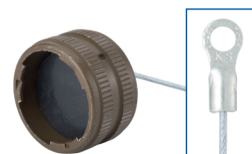
Protective caps – plastic
Standard version

Housing	Part Number
1	536 847 006
2	536 848 006
3	



Protective caps – metal
Standard and Waterproof versions

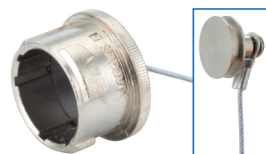
Housing	Part Number
1	630 720 006
2	536 845 006
3	536 846 006



Protective caps – metal
olive-green cadmium coating, High-Performance version*

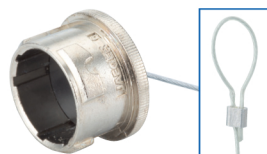
Housing	Part Number
1	630 720 256
2	536 845 256
3	536 846 256

* no RoHS



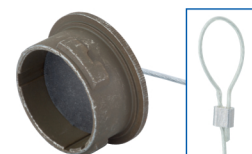
Protective caps – nickel plated metal
Standard version

Housing	Part Number Keying A	Part Number Keying B
1	632 720 006	632 720 036
2	532 214 006	532 214 036
3	532 218 006	532 218 036



Protective caps – nickel plated metal
Waterproof version

Housing	Part Number Keying A	Part Number Keying B
1	632 725 006	632 725 036
2	632 726 006	
3	632 728 006	



Protective caps – metal
olive-green cadmium coating, High-Performance version*

Housing	Part Number Standard	Part Number Waterproof
1	632 720 256	632 725 256
2		632 726 256
3		632 728 256

* no RoHS

RoHS

Protective caps for the Standard, Rapid, Waterproof Series

Protective caps are designed to prevent foreign substances entering and to ensure the contacts in the Waterproof Series are sealed when the cable connector, coupler connector or panel connector are disconnected from each other.

Protective caps

Standard version

Housing	Part Number
1	533 620 006
2	533 660 006

Protective caps

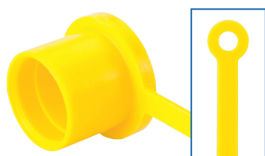
Waterproof version

Housing	Part Number
1	632 771 006
2	632 772 006
3	632 773 006

RoHS

Protective caps for Atto and Natto Miniature Push-Pull Series

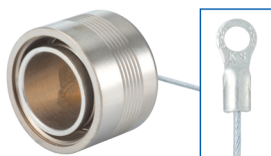
Protective caps are designed to prevent foreign substances entering and to ensure the contacts in the Waterproof Series are sealed when the cable connector, coupler connector or panel connector are disconnected from each other.



Protective caps – plastic

Standard version

Housing	Part Number
00	533 329 006
0	533 369 006



Protective caps – metal

Standard version

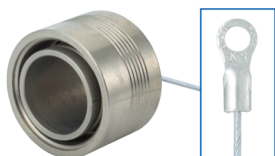
Housing	Part Number
00	533 610 006
0	533 650 006
1	761 907 006



Protective caps – metal, black anodising

High-Performance version

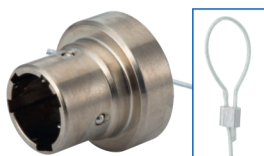
Housing	Part Number
00	533 610 106
0	533 650 106
1	761 907 106



Protective caps

ARCAP (stainless steel)

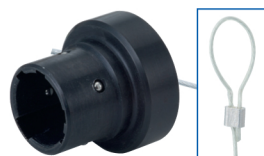
Housing	Part Number
1	761 907 756



Protective caps – nickel plated metal

Standard version

Housing	Part Number
00	536 620 006
0	536 660 006
1	536 610 006



Protective caps – metal, black anodising

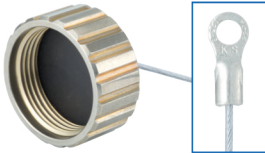
High-Performance version

Housing	Part Number
00	536 620 106
0	536 660 106
1	536 610 106

RoHS

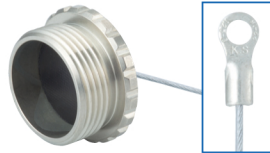
Protective caps for the Marine and Robotic Series

Protective caps are designed to prevent foreign substances entering and to ensure the contacts in the Marine Series are sealed when the cable connector, coupler connector or panel connector are disconnected from each other.



Protective caps – metal
ARCAP (stainless steel)

Housing	Part Number
1	637 820 006
2	637 825 006



Protective caps – metal
ARCAP (stainless steel)

Housing	Part Number
1	638 820 006
2	638 825 006

Protective caps – metal
ARCAP (stainless steel)

Housing	Part Number
1	637 820 436
2	637 825 436

RoHS

Protective caps for the Neptunox Series

Protective caps are designed to prevent foreign substances entering and to ensure the contacts are sealed when the cable connector, coupler connector or panel connector are disconnected from each other.



Protective caps – metal

Housing	Part Number
00	680 007 006
0	680 007 906
1	680 001 006
2	680 002 006



Protective caps – metal

Housing	Part Number
00	680 008 006
0	680 008 906
1	680 003 006
2	680 004 006



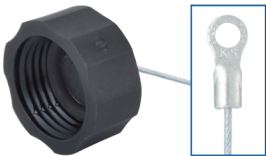
Protective caps – metal

Housing	Part Number
00	680 009 006
0	680 009 006
1	680 005 006
2	680 006 006

RoHS

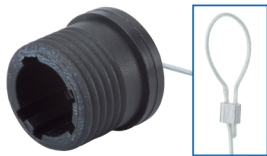
Protective caps for the Minex Series

Protective caps are designed to prevent foreign substances entering and to ensure the contacts are sealed when the cable connector, coupler connector or panel connector are disconnected from each other.



Protective caps – plastic

Number of Cts	Part Number
3	633 043 006
7	633 047 006



Protective caps – plastic

Number of Cts	Part Number
3	633 343 006
7	633 347 006

RoHS

Protective caps for the Power Series Puissance

Protective caps are designed to prevent foreign substances entering and to ensure the contacts are sealed when the cable connector, coupler connector or panel connector are disconnected from each other.



Protective caps

Housing	Part Number
5	809 306 006



Protective caps

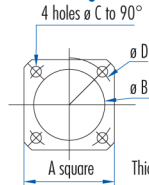
Housing	Part Number
5	809 406 006

RoHS

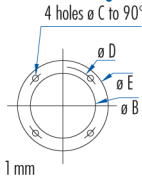
Gaskets under panel connectors for the Standard, Rapid, Waterproof, Miniature, Industrial, Marine, Neptunox, Robotic Series

Seals are used to achieve an ingress protection rating of: IP 54/65 depending on the associated cable connector.

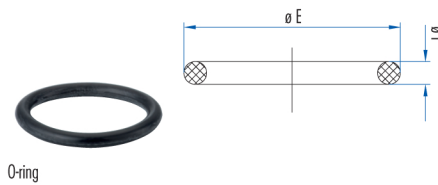
Square flat-gasket for panel connector Housings 1-2-3-5



Circular flat-gasket for panel connector Housings 4-5



Seal for female cable connector – Standard Series



Housing	Pack of 10 neoprene gaskets under panel connector	Pack of 10 Viton gaskets under panel connector for cable gland	Dimensions in mm				
			A	ø B	ø C	ø D	ø E
1	536 945 006	536 945 026	27	21,1	3,2	28	
2	536 946 006	536 946 026	32	27,2	3,5	34	
3	536 947 006		43	39,2	4,2	48	
4	536 126 006			45,2	4,2	54	63
5	536 136 006			52,2	4,2	62	70
5	536 136 016		55	48	4,2	62	

Housing	Pack of 10 cable connector seals	Dimensions in mm	
		ø E	ø F
1	532 510 006	19	2
2	532 511 006	25,5	1,8
3	532 512 006	36,5	2,5
4	532 514 006	41	2
5	532 516 006	46	2

RoHS

Gaskets under panel connector for Minex Series

Seals are used to achieve an ingress protection rating of:
IP 54/65 depending on the associated cable connector.



Flat-Gasket for panel connector

Number of Cts	Pack of 10 neoprene gaskets under panel connector
3	633 121 006
7	633 124 006

RoHS

Seals for the Power Series Puissance

Seals are used to achieve an ingress protection rating of:
IP 54/65 depending on the associated cable connector.



Housing	Pack of 10 neoprene gaskets under panel connector	Part Number
5	Circular gaskets under panel connector (neoprene 1 mm)	536 136 006
5	Circular gaskets under panel connector (neoprene 1 mm)	536 136 016

RoHS

Gaskets under panel connector for Atto and Natto Miniature Push-Pull Series

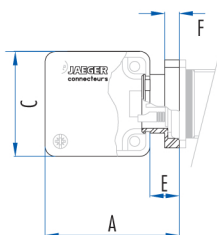
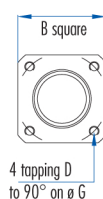
Seals are used to achieve an ingress protection rating of: IP 54/65 depending on the associated cable connector.



Housing	Pack of 10 neoprene gaskets under panel connector	Pack of 10 viton gaskets under panel connector for cable
00	533 328 006	533 328 016
0	533 368 006	533 368 016
1	536 945 006	536 945 016

RoHS

Housings for panel connectors in the Standard and Rapid Series

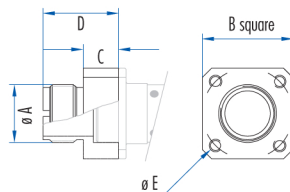


Housing	Number of Contacts	Compleat housing ISO screws	Accessories			
			Cable clamp	10 gaskets under panel connector	pack of 100 ISO screws	End fittings for soldering
1	3-4-6	536 935 006	532 900 006	536 945 006	504 222 006	042 547 006
1	3-4-6	536 935 006	or 532 328 006	536 945 006	504 222 006	or 532 998 006
1	3-4-6	536 935 006	or 630 135 006	536 945 006	504 222 006	or 042 937 006
2	4 (ø4)-8-12	536 937 006	532 960 006	536 946 006	504 222 006	532 955 006
2	4 (ø4)-8-12	536 937 006	or 532 329 006	536 946 006	504 222 006	532 955 006
2	4 (ø4)-8-12	536 937 006	or 630 138 006	536 946 006	504 222 006	532 955 006
3	17	536 996 006	532 940 006	536 947 006	504 266 006	042 940 006
3	17	536 996 006	or 532 350 006	536 947 006	504 266 006	or 042 943 006
3	17	536 996 006	or 630 155 006	536 947 006	504 266 006	
4	25	536 880 006	532 940 006		504 266 006	042 940 006
4	25	536 880 006	or 532 350 006		504 266 006	or 042 943 006
4	25	536 880 006	or 630 155 006		504 266 006	
5	35-52	536 881 006	630 171 006	536 136 016	504 266 006	042 945 006
5	35-52	536 881 006	or 630 175 006	536 136 016	504 266 006	042 945 006

Housing	Dimensions mm						
	A	B	C	ø D	E	F	ø G
1	41	27	32,2	M3	9	5	28
2	45,4	32	36,4	M3	9	5	34
3	52,6	43	47,6	M4	10	6	48
4	58	47	53,8	M4	10	6	54
5	65	54	61,5	M4	10	6	62

RoHS

Threaded adaptors for connectors in the Atto and Natto Miniature Push-Pull Series



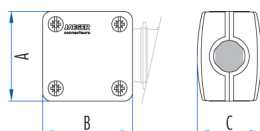
Housing	Part Number Standard	Part Number Cable Gland	Dimensions mm			
			A	B	C	D
00	533 348 006	533 348 106	M 11,5	18	7	15
0	533 349 006	533 349 106	M 15	20	7	15
1	533 347 006	533 347 016	M 20	27	11	19
1	536 866 006	536 866 016	Pg 16	27	10,5	20,5

RoHS

Connectors with non-removable contacts

Connectors with removable contacts

Housings for panel connectors in the Miniature and Industrial Series



Housing	Housing for panel connector	Cable clamp page 106	Housing	Dimension mm		
				A	B	C
1	533 550 006	532 894 006	1	32,2	32,2	20,2
1	533 550 006	or 532 328 006	2	36,4	36,4	23,5
1	533 550 006	or 630 135 006	3	47,6	42,6	31,3
2	533 558 006	532 960 006				
2	533 558 006	or 532 329 006				
2	533 558 006	or 630 138 006				
3	533 559 006	532 940 006				
3	533 559 006	or 532 350 006				
3	533 559 006	or 630 155 006				

RoHS

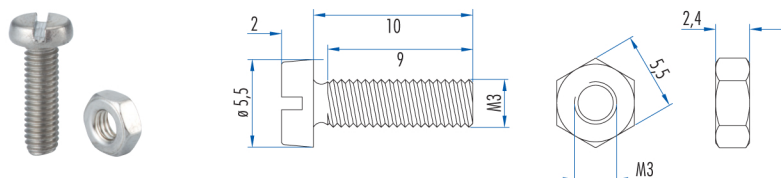
Accessories

Technical guides

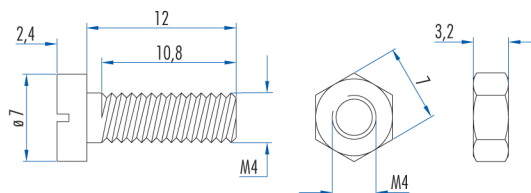
Screws and nuts for the Standard, Rapid, Miniature, Industrial, Marine, Neptunox, Robotic Series

These screws and nuts are used to attach the panel connectors to the supporting walls.

Housings 1-2



Housings 3-4-5

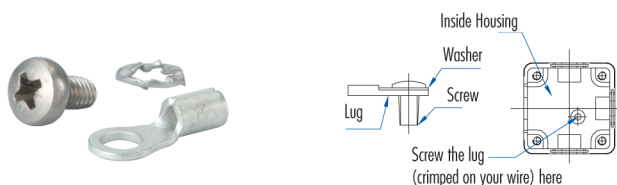


Housing	Screws Pack of 100	Nuts Pack of 100	Thread	Protection
1, 2	504 222 006	504 523 006	M 3	Nickel-plating
3,4,5	504 266 006	504 531 006	M 4	Nickel-plating

RoHS

Grounding kit for housing in the Standard, Rapid, Miniature, Industrial, Robotic Series

For rectangular housings B1 to B5.



Grounding Kit

630 100 006

RoHS

Couplings for bare flexible hoses in the Standard, Rapid, Miniature, Industrial and Robotic Series

For rectangular housings B1 to B5.

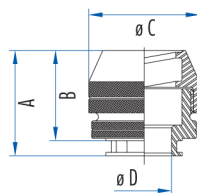
These couplings can be fitted to the **cable connectors** and **coupler connectors** with rectangular housing and housings for panel connectors. They allow the attachment to one or more outlets of the housing of standardised flexible hoses (according to standards NF C68 100 and NF C68 161).

These metal hoses with no sheaths may be simple interlock or semi-waterproof.

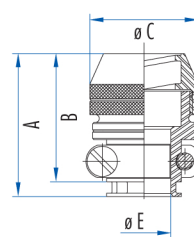
They may also be covered with shielding braid. These couplings consist of a barrel held tightly between the two shells of the cable connector, the coupler connector or the housing for panel connector and a ring with a left-hand thread. The hose is held between the two parts.

A cable clamp is incorporated into the barrel of type two couplings in order to reduce the force exerted on the cable. Barrel and nut are made of nickel-plated brass.

Type 1, couplings without cable clamp



Type 2, couplings with cable clamp



RoHS

Housing	Type 1 couplings without cable clamp	ø Bare Cable	Type 2 couplings with cable clamp	Clamping ø		Flexible Hoses	
				min.	max.	Designation	ø mm
1	532 967 006	9	532 962 006	7	9	MSB 7-7	9,5 x 12,3
2	532 968 006	12	532 963 006	9	12	MSB 7-9	12 x 15
3-4	532 969 006	17	532 964 006	12,5	17	MSB 7-13	17,5 x 20,5
5			532 965 006	12,5	17	MSB 7-13	17,5 x 20,5

Type	Housing	Dimensions in mm				Clamping ø E		Weight in g
		A	B	ø C	ø D	min.	max.	
1	1	16,5	14,5	19	9			15
1	2	18	16	21	12			18
1	3-4-5	22,5	19,5	27	17			34
2	1	22,5	20,5	19		7	9	18
2	2	27	24	21		9	12	28
2	3-4-5	31,5	28,5	27		12,5	17	45

Couplings for covered flexible hoses in the Standard, Rapid, Miniature, Industrial and Robotic Series

For rectangular housings B1 to B5.

These couplings can be fitted to the **cable connectors** and **coupler connectors** with rectangular housing and housings for panel connectors. They allow the attachment to one or more outlets of the housing of standardised flexible hoses (according to standards NF C68 100 and NF C68 161).

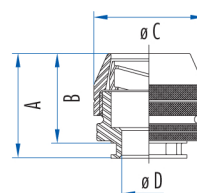
These couplings consist of a barrel held tightly between the two shells of the cable connector,

the coupler connector or the housing for panel connector and a ring with a left-hand thread.

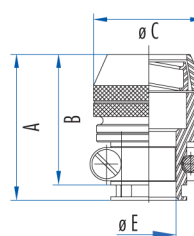
The hose is held tightly between the two parts and the plastic sheath is gripped between the two tapered seatings of the ring. A cable clamp is incorporated into the barrel of type 2 couplings in order to reduce the force exerted on the cable.

Barrel and nut are made of nickel-plated brass.

Type 1, couplings without cable clamp



Type 2, couplings with cable clamp



RoHS

Housing	Type 1 couplings without cable clamp	ø Bare Cable	Type 2 couplings with cable clamp	Clamping ø		Flexible Hoses	
				min.	max.	Designation	ø mm
1	530 130 006	9	530 133 006	7	9	MSB 7-7	9 x 12,3
2	530 131 006	11	530 134 006	9	11	MSB 7-9	11 x 15
3-4	530 132 006	15	530 135 006	12,5	15	MSB 7-13	15 x 20,4
5		23		15	23	MSB 7-21	23 x 28,2

Type	Housing	Dimensions in mm				Clamping ø E		Weight in g
		A	B	ø C	ø D	min.	max.	
1	1	16,5	14,5	19	9			15
1	2	18	16	21	11			18
1	3-4	22,5	19,5	27	15			32
1	5	28	24	36	23			60
2	1	22,5	20,5	19		7	9	13
2	2	27	24	21		9	11	25
2	3-4	31,5	28,5	27		12,5	17	45
2	5	44	40	36		15	23	90

Spare parts for circular panel connectors



Housing	Number of Contacts	Pack of 10 gaskets	Nut	Locknut
1	3-4-6	536 440 006	536 446 006	536 443 006
2	4 (ø 4)-8-12	536 441 006	536 447 006	536 444 006
3	17	536 442 006	536 448 006	
4	25	536 451 006	536 450 006	
5	35-52	536 454 006	536 453 006	

RoHS

Sealing accessory: Compound for all series

Compound to coat the connections.

Compound tube 100g 532 080 006	Approximately 1 tube for 10 parts
--------------------------------------	---



Type: Silicone elastomer, cold self-curing by contact with water or atmospheric humidity without the addition of a catalyst.

Aim: This product provides protection and waterproofing for the connections in the connectors, particularly in certain harsh operating conditions:

- very high ambient humidity, splashes of liquid or immersion;
- high ambient temperature;
- severe vibrations

The use of this product is not restricted to electrical connections.

Characteristics after curing:

Mechanical data:

- Tensile force: 35 daN/cm²
- Shore A hardness: 45
- Density at 20 °C: 1,2
- Operating temperature: -70 °C to +200 °C

Electrical data:

Characteristics	Dry sample	Sample after 24 hours immersed in water
Volume resistivity	10 ⁹ MΩ. cm	2 x 10 ⁸ MΩ. cm
Losses (tangent of the angle) for frequency = 1MHz	3 x 10 ⁻³	5 x 10 ⁻³
Electric constant	3 ± 0,2	3 ± 0,2
Dielectric strength	20000 V/mm	18000 V/mm

Resistance to chemical agents:

- (after 8 days of immersion at 25 °C)
- Hot water (85 °C): good resistance
 - Boiling water: significant degradation after one month of immersion.
 - Ethyl alcohol: no swelling

Solvents:

- Acetone: no swelling
- Mineral spirits: significant swelling
- Trichlorethylene: significant swelling
- Fuel: significant swelling
- Kerosene JP4: significant swelling

Oils:

- Oil ASTM N° 1: no swelling
- Oil ASTM N° 3: no swelling

Acids:

- Sulphuric acid 66 °B: no swelling
- Nitric acid 40 °B: no swelling
- Hydrochloric acid 22 °B: no swelling

Bases:

- Sodium hydroxide 36 °B: no swelling
- Ammonia: no swelling

Application:

- Easy and immediate application without prior mixing.
- Curing in the air (7 to 10 hours).
- See instructions with the packaging each tub.

Precautions:

- After use, carefully squeeze out any air remaining in the neck of the tube and replace the cap.
- Avoid storing the tube at temperatures higher than 40 °C.

RoHS

Accessories for sealable connectors for the Standard, Rapid, Miniature, Industrial and Robotic Series

For rectangular housings B1 to B2.



Housing	Pack of screws for panel connector*	Pack of screws for cable connector*	Drilling ø for the head of screw	Material
1	536 810 006	536 812 006	1,2 mm	Stainless steel
2	536 810 006	536 813 006	1,2 mm	Stainless steel

* The sealing of a Cable connector / Panel connector assembly requires the use of:
1 pack for panel connector 1 screw + 1 pack for cable connector 2 screws

RoHS

Sleeves for the Standard, Rapid, Miniature, Industrial and Robotic Series

For rectangular housings B1 to B2. Used as a grommet, it protects the connection soldering against the bending forces exerted on the electric cable.

The moulded synthetic rubber sleeve is held between the two shells of the cable connectors, coupler connectors or panel connector housings. It is suitable for cables with insulating sheaths (plastic or rubber). Operating temperature: -25 °C to +100 °C



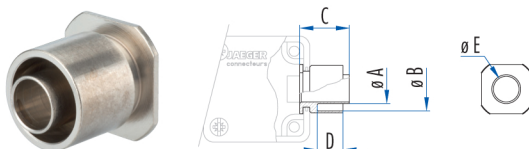
Housing	Sleeve	Connection cable (mm)	
		ø min.	ø max.
1	532 970 006	5 *	5,5
2	532 975 006	9 *	10

* N.B. for cables having a diameter less than the minimum value, use an intermediate sleeve (approximately 60 mm in length), e.g. a heat-shrinkable sheath.

RoHS

Weld-on end fittings for the Standard, Rapid, Miniature, Industrial and Robotic Series

For rectangular housings B1 to B5.



Housing	Part Number	Dimension and No. of the sheath	Dimensions mm					Weight in grams
			ø A	ø B	C	D	ø E	
1	042 937 006	7,5 x 10,5 mm - No. 5	7,5	10,8	15	9,9	6,4	7
1	042 547 006	10,5 x 14 mm - No. 7	10,4	14,9	15	11,3	9,2	7
1	532 998 006*	9,5 x 12,5 mm - MSB 7	9	12,9	15,5	10,4	8	4
2	532 955 006*	12 x 15,2 mm - MSB 9	12	16,5	15	9,7	10,8	5
3-4	042 940 006	15 x 19 mm - No. 11	15	20,1	21,5	17	13,9	11
3-4	042 943 006	19 x 23 mm - No. 16	18,8	24,1	19,5	15	17	18
5	042 945 006*	19 x 23 mm - No. 16	18,7	24,2	19,4	14,9	17	

*These end fittings are designed to be connected to AFNOR standardised flexible metal hose according to standards NFC 68 100 and NFC 68 161.

These end fittings allow the attachment to one or more of the housing outlets of a flexible protective sheath or a braided metal sheath for shielded cables or a grounding braid.

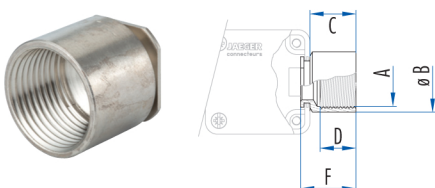
The end fitting is held tightly between the two shells of the cable connector, the coupler connector or the housing of the panel connector.

RoHS

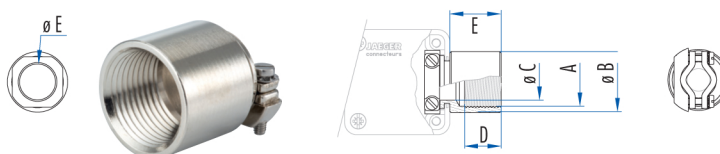
End fittings with Pg and ISO thread* for the Standard, Rapid, Miniature, Industrial, Robotic Series

For rectangular housings B1 to B5.

Type 1, without cable clamp



Type 2, with cable clamp



Housing	End fitting Type 1	End fitting + Cable clamp Type 2	Dimensions mm					
			A Thread	ø B	C max.	D	ø E	F
1	536 801 006	536 821 006	Pg 9	18	9	12,5	17,2	20
1	536 806 006		M 13	17	9	9	13,5	16,5
1	536 807 006		M 16	20	9	13	17,2	20
2	536 802 006	536 822 006	Pg 11	22	12,5	13	18,1	21
2	536 808 006		M 20	25	12,5	13	18,1	21
3-4	536 803 006	536 823 006	Pg 16	26	18	16,5	20,8	24
5	630 174 006		Pg 21	34	22	16,5	20,8	24

*According to standards DIN 40430 and NFC 63021

The threaded end fitting is held between the two shells of the cable connector, the coupler connector or the panel connector housing. The end fitting with Pg and ISO thread is designed to receive a coupling compatible with a metal or plastic sheath from the manufacturers listed below. Companies selling sheaths and couplings: Capri-Codex, Conducto, Gaudex, Lutzé, Promer-Pma, Rudolph, SE Sterling, Sonolia, S.T.B, Textilver, T.F.T. These end fittings are brass protected by nickel-plating.

RoHS

Crimp end fittings

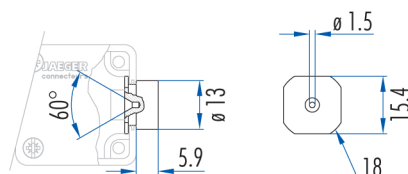


Housing	Part Number	Cable max. capacity
1	530 099 006	ø 6,1
1	530 102 006	ø 7,9
2	530 122 006	ø 7,9

RoHS

End fittings for pyrometer tubes

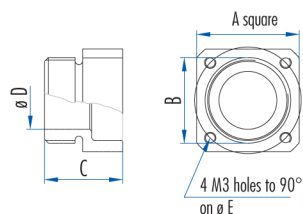
For rectangular housing B1



End fitting
for pyrometer tube
530 126 026

RoHS

Threaded adaptors for connectors in the Standard, Rapid, Waterproof, Miniature, Industrial Series



Alternative to panel connector housing

Housing	Support	Thread	Surface Treatment	Material	Dimensions mm				
					A	B	C	ø D	ø E
1	536 864 006*	Pg 13	Ni	Brass	27	Pg 13	12,6	15,2	28
1	536 866 006	Pg 16	Ni	Brass	27	Pg 16	20,5	15,2	28
1	536 863 006	G 1/2"	Ni	Brass	27	G 1/2"	20,5	15,2	28
1	536 861 006	NPT 1/2	Ni	Brass	27	NPT 1/2	20,5	15,2	28

* Only for series Standard, Rapid and Waterproof.

RoHS

Blanking plate kit for the Standard, Rapid, Waterproof, Miniature, Industrial, Marine, Neptunox and Robotic Series

This blanking plate kit is designed to seal the hole made in the wall to attach the panel connector when it is no longer needed. After removing the panel connector, fit the seal and then the blanking plate. Then screw in place using 4 screws, nuts and washers.

This blanking plate kit contains: a flat-gasket for panel connector, 4 screws, 4 washers, 4 nuts and a square blanking plate.

Material: nickel-plated brass



Housing	Part Number
1	536 691 066
2	536 692 066

RoHS

Replacement ground terminal ø 1 mm for the Robotic Series

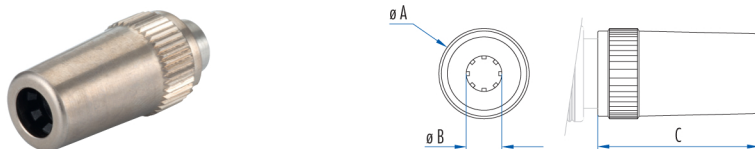
Cable connector	Pack of 10
Coupler Connector	
Male / Female	638 004 016



Cable cross-section: 0,6 mm² to 1,9 mm²

RoHS

Long cable gland (with claw and/or 360° shield connection) for the Atto and Natto Miniature Push-Pull Series



Housing	Standard	360° Shielding	Dimensions mm			
	Part Number	Part Number	ø A	ø B min.	ø B max.	C
00	769 807 006	769 907 006	14	3,6	6,8	25,8
0	769 819 006	769 919 006	17,5	4,6	8,5	31,2
1		769 927 006	22,5	10	13	39,5

RoHS

Short cable gland (without claw) for Atto and Natto Miniature Push-Pull Series



Housing	Standard	360° Shielding	Dimensions mm			
	Part Number	Part Number	ø A	ø B min.	ø B max.	C
00	530 332 006	530 694 006	14	3,6	6,7	18,2
0	530 372 006	530 695 006	17,5	6,3	9	23,8

RoHS

Union nut for the Natto Miniature Push-Pull Series



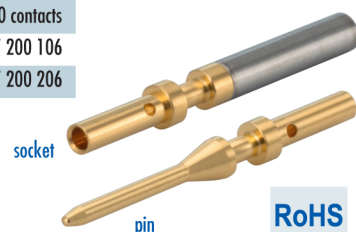
To ensure the cable is watertight and to guarantee the mechanical resistance, cable connectors and coupler connectors must be fitted with a connection accessory to be selected from the following items, according to the diameter of the cable.

Housing	Contacts	Part Number	Dimensions mm		
			ø A	ø B	C
00	3	530 330 006	14	11,3	6
00	4	530 840 006	14	11,3	6
0		530 370 006	17,5	12	7,8

RoHS

Replacement contacts ø 0,76 mm for the Atto Miniature Push-Pull Series

Contacts	Tube of 7 contacts	Tube of 8 contacts	Tube of 12 contacts	Tube of 19 contacts	Tube of 25 contacts	Tube of 27 contacts	Tube of 50 contacts	Tube of 100 contacts	Tube of 200 contacts
Pins	767 107 006	767 108 006	767 012 006	767 119 006	767 025 106	767 127 006	767 050 106	767 100 106	767 200 106
Sockets	767 207 006	767 208 006	767 212 006	767 219 006	767 025 206	767 227 006	767 050 206	767 100 206	767 200 206



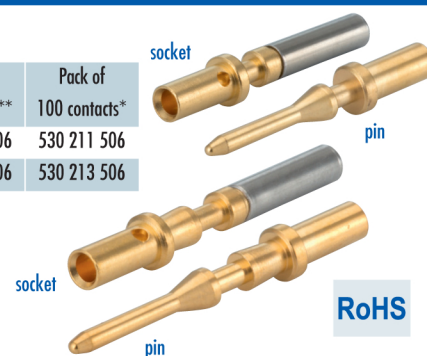
RoHS

Replacement contacts ø 1 mm for the Miniature, Natto Miniature Push-Pull, Marine, Neptunox and Robotic Series

Contacts	Pack of 3 contacts*	Pack of 4 contacts*	Pack of 7 contacts*	Pack of 12 contacts**	Pack of 19 contacts**	Pack of 27 contacts**	Pack of 37 contacts**	Pack of 55 contacts**	Pack of 100 contacts*
Pins	530 303 006	533 877 006	530 307 006	530 311 006	530 313 006	530 315 006	530 317 006	530 319 006	530 211 506
Sockets	530 302 006	533 876 006	530 306 006	530 310 006	530 312 006	530 314 006	530 316 006	530 318 006	530 213 506

* For connectors with 3, 4 and 7 contacts: contact length 14,5 mm

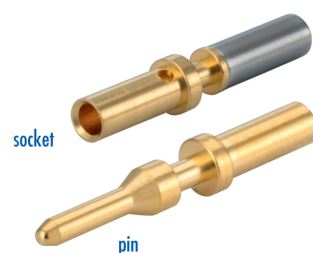
** For connectors with 12, 19, 27, 37 and 55 contacts: contact length 17,5 mm



RoHS

Replacement contacts ø 1,6 mm for the Natto Miniature Push-Pull, Industrial, Marine, Neptunox and Robotic Series

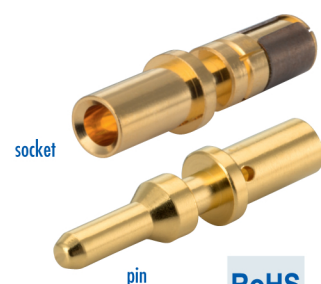
Contacts	Pack of 3 contacts	Pack of 7 contacts	Pack of 12 contacts	Pack of 19 contacts	Pack of 27 contacts	Pack of 100 contacts
Pins	630 643 006	630 643 006	630 642 006	630 649 006	630 677 006	630 800 006
Sockets	630 633 006	630 637 006	630 632 006	630 639 006	630 667 006	630 700 006



RoHS

Replacement contacts ø 2,4 mm for the Natto Miniature Push-Pull, Industrial, Marine, Neptunox and Robotic Series

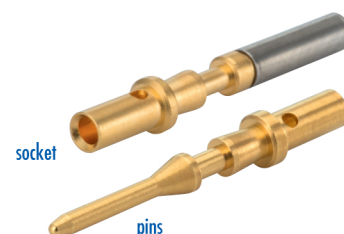
Contacts	Pack of 3 contacts	Pack of 4 contacts	Pack of 7 contacts	Pack of 12 contacts
Pins	630 843 006	630 844 006	630 847 006	630 842 006
Sockets	630 833 006	630 834 006	630 837 006	630 832 006



RoHS

Replacement contacts: 17 mixed contacts ø 1 mm and ø 2,4 mm for the Industrial and Robotic Series

Contacts	Tube of	
	17 contacts	13 contacts ø 1 mm and 3 contacts de ø 2,4 mm
Pins	241 117 006	
Sockets	241 217 006	



RoHS

Connectors with non-removable contacts

Replacement contacts for the Power Series Puissance

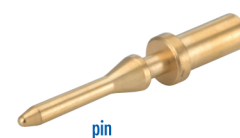
Cross-section of the cable	Contacts		Part Number	
	ø (mm)	No. of contacts per pack	Pins pack	Sockets pack
	1,6	2	630 643 006	630 633 006
25 mm ²	8	3	807 103 006	807 203 006
25 mm ²	8	4	807 104 006	807 204 006
35 mm ²	8	3	807 103 356	807 203 356
95 mm ²	12	2	897 101 106	897 201 006

RoHS

Connectors with removable contacts

Replacement contacts for the Minex Series

Contacts	Pack of	Pack of
	3 contacts	7 contacts
Pins	530 303 006	530 307 006
Sockets	530 302 506	530 306 506



RoHS

Accessories

Technical guides

Thermocouple data

In 1821, Seebeck discovered that an electric current flows in a closed loop with two wires made of different metals if the temperature of one of the two junctions is higher than that of the other. This bimetallic combination was called a **thermocouple**.

If one of the junctions is open whilst keeping its two ends at the same temperature, the electromotive force measured between the two ends depends on the difference in temperature between the two junctions more precisely, the electromotive force depends on the temperature of a single junction if the other is maintained at constant temperature.

Different combinations of metals and alloys were tested to form a thermocouple or thermoelectric couple. The main types of pairs selected are:

- **Type S:** a platinum rhodium 10% component and a platinum component
- **Type J:** an iron component and a constantan component
- **Type T:** a copper component and a constantan component
- **Type K:** a chromel component and an alumel component
- **Type E:** a chromel component and a constantan component

There are other thermocouples but they are less commonly used.

The thermoelectric properties thus discovered gave rise to temperature measurement in industry. Some examples of use: pyrometer tubes, freeze-driers, medical, engine bearing temperature control, etc.

The choice of thermocouple is governed by:

- The temperature range to be measured
- its resistance to pollution and corrosion
- the resistance of the thermocouple for a given gas atmosphere

Type	Colour Code Norme: IEC 584.3	Conductor +	Conductor -	Temperature	Application recommended in atmospheres				
					vacuum	oxidizing	reducing	inert	gaseous
K	Green	Chromel	Alumel	-270 °C +1370 °C		x		x	Air argon
T	Brown	Copper	Constantan	-270 °C +400 °C		x	x		Air argon nitrogen
J	Black	Iron	Constantan	-210 °C +1200 °C	x	x	x	x	Air argon nitrogen
S	Yellow	Platine Rhodium 10% Rh	Platinum	-50 °C +1760 °C		x			Air
E	Purple	Chromel	Constantan	-270 °C +1000 °C		x		x	Air argon

Part Numbers for thermocouple contacts for our Series of connectors with removable contacts

Natto Miniature Push-Pull Series, Miniature Series, Industrial Series, Marine Series, Robotic Series, Minex Series

- These thermocouple contacts, male or female, are interchangeable with the „Standard“ contacts for the series listed above.
 - The following are sold in packs under each part number: either two pins or two sockets, each pair of contacts making up a couple.
- In each pack, the positive + contact is the shortest pin or socket.

For connector	Couple – Type K		Couple – Type J		Couple – Type T		Couple – Type S		Couple – Type E	
	Chromel + Pack of 2 pins	Alumel - Pack of 2 sockets	Iron + Pack of 2 pins	Constantan - Pack of 2 sockets	Copper + Pack of 2 pins	Constantan - Pack of 2 sockets	Platinum Rhodium 10% + Pack of 2 pins	Platinum - Pack of 2 sockets	Chromel + Pack of 2 pins	Constantan - Pack of 2 sockets
ø 1 mm-B0-B00 3-4-7 ds	530 350 006	530 351 006	530 352 006	530 353 006	530 354 006	530 355 006	530 366 006	530 367 006	503 364 006	530 365 006
ø 1 mm 12-19-27 37-55 contacts	530 356 006	530 357 006	530 358 006	530 359 006	530 360 006	530 361 006	530 368 006	530 369 006	530 308 006	530 309 006
ø 1,6 mm 3-4-7 12-19-27 contacts	630 650 006	630 651 006	630 652 006	630 653 006	630 654 006	630 655 006	630 655 006	630 657 006		