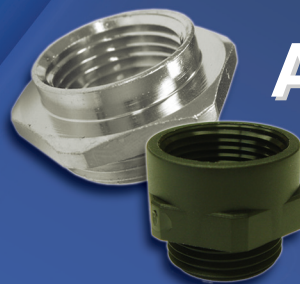




Dealing with foreign products?

Is connecting a challenge?



ADAPTERS



REDUCERS

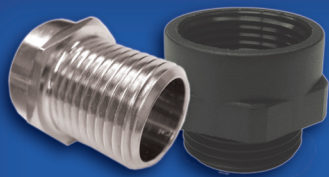


ENLARGERS



Your Solution House for
NPT, Metric & PG Threads!





Adapters



NPT to METRIC THREADS

PART NUMBER	MALE THREAD (A)	FEMALE THREAD (B)	THREAD LENGTH (T)	HEIGHT (H)
			INCHES (MM)	INCHES (MM)
AT-1216-BR	1/2" NPT	M16 x 1,5	.79 (20)	1.18 (30)
AT-1220-BR	1/2" NPT	M20 x 1,5	.91 (23)	1.50 (38)
AT-1225-BR	1/2" NPT	M25 x 1,5	.79 (20)	1.20(30.5)
AT-1032-BR	1" NPT	M32 x 1,5	.63 (16)	1.30 (33)
AT-5432-BR	1-1/4" NPT	M32 x 1,5	.67 (17)	1.30 (33)

NPT to PG THREADS

PART NUMBER	MALE THREAD (A)	FEMALE THREAD (B)	THREAD LENGTH (T)	HEIGHT (H)
			INCHES (MM)	INCHES (MM)
AN-1407-BR	1/4" NPT	PG 7	.59 (15)	.98 (25)
AN-1209-BR	1/2" NPT	PG 9	.79 (20)	1.18 (30)
AN-1211-BR	1/2" NPT	PG 11	.79 (20)	1.18 (30)
AN-1213-BR	1/2" NPT	PG 13	.79 (20)	1.18 (30)
AN-1221-BR	1/2" NPT	PG 21	.79 (20)	1.26 (32)
AN-3421-BR	3/4" NPT	PG 21	.71 (18)	1.26 (32)
AN-1029-BR	1" NPT	PG 29	.98 (25)	1.38 (35)
AN-5429-BR	1-1/4" NPT	PG 29	.94 (24)	1.38 (35)

PG to NPT THREADS

PART NUMBER	MALE THREAD (A)	FEMALE THREAD (B)	THREAD LENGTH (T)	HEIGHT (H)
			INCHES (MM)	INCHES (MM)
AG-1112-BK	PG 11	1/2" NPT	.27 (7)	.83 (21)
AG-1312-BK	PG 13.5	1/2" NPT	.35 (9)	.91 (23)
AG-0912-AL	PG 9	1/2" NPT	.25 (6)	.94 (24)
AG-0912-BR	PG 9	1/2" NPT	.26 (6.5)	.94 (24)
AG-1112-BR	PG 11	1/2" NPT	.24 (6)	.89 (22.7)
AG-1312-BR	PG 13	1/2" NPT	.24 (6)	.93 (23.5)
AG-1612-BR	PG 16	1/2" NPT	.26 (6.5)	.91 (23)
AG-2112-BR	PG 21	1/2" NPT	.27 (7)	.59 (15)
AG-2134-BR	PG 21	3/4" NPT	.27 (7)	.94 (24)
AG-2910-BR	PG 29	1" NPT	.31 (8)	.79 (20)

METRIC to NPT THREADS

PART NUMBER	MALE THREAD (A)	FEMALE THREAD (B)	THREAD LENGTH (T)	HEIGHT (H)
			INCHES (MM)	INCHES (MM)
AM-1612-BK	M16 x 1,5	1/2" NPT	.24 (6)	1.30 (33)
AM-2012-BK	M20 x 1,5	1/2" NPT	.27 (7)	1.06 (27)
AM-1612-BR	M16 x 1,5	1/2" NPT	.24 (6)	.91 (23)
AM-2012-BR	M20 x 1,5	1/2" NPT	.24 (6)	.91 (23)
AM-2512-BR	M25 x 1,5	1/2" NPT	.27 (7)	.57 (15)
AM-2534-BR	M25 x 1,5	3/4" NPT	.27 (7)	1.07 (26)
AM-3210-BR	M32 x 1,5	1" NPT	.31 (8)	1.30 (33)
AM-3254-BR	M32 x 1,5	1-1/4" NPT	.31 (8)	1.30 (33)

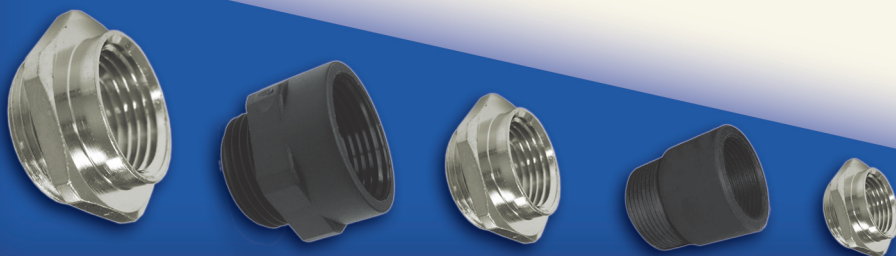
PG to METRIC THREADS

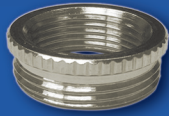
PART NUMBER	MALE THREAD (A)	FEMALE THREAD (B)	THREAD LENGTH (T)	HEIGHT (H)
			INCHES (MM)	INCHES (MM)
AP-0712-BK	PG 7	M12 x 1,5	.59 (15)	1.34 (34)
AP-0912-BK	PG 9	M12 x 1,5	.59 (15)	1.34 (34)
AP-0916-BK	PG 9	M16 x 1,5	.31 (8)	.79 (20)
AP-1116-BK	PG 11	M16 x 1,5	.59 (15)	1.34 (34)
AP-1120-BK	PG 11	M20 x 1,5	.59 (15)	1.34 (34)
AP-1316-BK	PG 13	M16 x 1,5	.31 (8)	.55 (14)
AP-1320-BK	PG 13	M20 x 1,5	.31 (8)	.83 (21)
AP-1620-BK	PG 16	M20 x 1,5	.31 (8)	.83 (21)
AP-1625-BK	PG 16	M25 x 1,5	.31 (8)	.91 (23)
AP-2125-BK	PG 21	M25 x 1,5	.59 (15)	1.34 (34)
AP-2132-BK	PG 21	M32 x 1,5	.31 (8)	.91 (23)
AP-2932-BK	PG 29	M32 x 1,5	.59 (15)	1.34 (34)
AP-2940-BK	PG 29	M40 x 1,5	.39 (10)	1.06 (27)
AP-3640-BK	PG 36	M40 x 1,5	.59 (15)	.79 (20)
AP-3650-BK	PG 36	M50 x 1,5	.59 (15)	1.36(34.5)
AP-4240-BK	PG 42	M40 x 1,5	.59 (15)	.79 (20)
AP-4250-BK	PG 42	M50 x 1,5	.59 (15)	1.36(34.5)
AP-4850-BK	PG 48	M50 x 1,5	.59 (15)	.79 (20)
AP-4863-BK	PG 48	M63 x 1,5	.59 (15)	1.38 (35)
AP-0916-BR	PG 9	M16 x 1,5	.24 (6)	.65(16.5)
AP-1120-BR	PG 11	M20 x 1,5	.26 (6.5)	.75 (19)
AP-1320-BR	PG 13	M20 x 1,5	.26 (6.5)	.75 (19)
AP-1625-BR	PG 16	M25 x 1,5	.26 (6.5)	.83 (21)

METRIC to PG THREADS

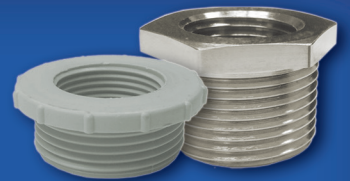
PART NUMBER	MALE THREAD (A)	FEMALE THREAD (B)	THREAD LENGTH (T)	HEIGHT (H)
			INCHES (MM)	INCHES (MM)
AF-1207-BK	M12 x 1,5	PG 7	.31 (8)	.79 (20)
AF-1609-BK	M16 x 1,5	PG 9	.59 (15)	1.34 (34)
AF-2013-BK	M20 x 1,5	PG 13	.31 (8)	.83 (21)
AF-2513-BK	M25 x 1,5	PG 13	.31 (8)	.55 (14)
AF-2516-BK	M25 x 1,5	PG 16	.31 (8)	.87 (22)
AF-3221-BK	M32 x 1,5	PG 21	.39 (10)	.98 (25)
AF-4029-BK	M40 x 1,5	PG 29	.39 (10)	.98 (25)
AF-5036-BK	M50 x 1,5	PG 36	.47 (12)	1.22 (31)
AF-6342-BK	M63 x 1,5	PG 42	.59 (15)	.79 (20)
AF-6348-BK	M63 x 1,5	PG 48	.59 (15)	1.38 (35)
AF-1609-BR	M16 x 1,5	PG 9	.24 (6)	.65(16.5)
AF-2011-BR	M20 x 1,5	PG 11	.26 (6.5)	.75 (19)
AF-2013-BR	M20 x 1,5	PG 13	.26 (6.5)	.75 (19)
AF-2016-BR	M20 x 1,5	PG 16	.26 (6.5)	.75 (19)
AF-2516-BR	M25 x 1,5	PG 16	.26 (6.5)	.75 (19)
AF-2521-BR	M25 x 1,5	PG 21	.26 (6.5)	.85 (21)
AF-3229-BR	M32 x 1,5	PG 29	.28 (7)	.91 (23)

See Last Page for Product Specifications!





Reducers



NPT to NPT THREADS

PART NUMBER	MALE THREAD (A)	FEMALE THREAD (B)	THREAD LENGTH (T)	HEIGHT (H)
			INCHES (MM)	INCHES (MM)
RN-3412-BR	3/4" NPT	1/2" NPT	.71 (18)	.87 (29)
RN-1034-BR	1" NPT	3/4" NPT	.98 (25)	1.14 (29)
RN-5410-BR	1-1/4" NPT	1" NPT	.98 (25)	1.14 (29)

PG to PG THREADS

PART NUMBER	MALE THREAD (A)	FEMALE THREAD (B)	THREAD LENGTH (T)	HEIGHT (H)
			INCHES (MM)	INCHES (MM)
*RP-0907-BR	PG 9	PG 7	.24 (6)	.34 (8.8)
*RP-1107-BR	PG 11	PG 7	.24 (6)	.35 (9)
*RP-1109-BR	PG 11	PG 9	.24 (6)	.35 (9)
*RP-1309-BR	PG 13	PG 9	.26 (6.5)	.37 (9.5)
*RP-1311-BR	PG 13	PG 11	.26 (6.5)	.37 (9.5)
*RP-1609-BR	PG 16	PG 9	.26 (6.5)	.37 (9.5)
*RP-1611-BR	PG 16	PG 11	.26 (6.5)	.37 (9.5)
*RP-1613-BR	PG 16	PG 13	.26 (6.5)	.37 (9.5)
*RP-2111-BR	PG 21	PG 11	.27 (7)	.41(10.3)
*RP-2113-BR	PG 21	PG 13	.27 (7)	.41(10.3)
*RP-2116-BR	PG 21	PG 16	.27 (7)	.41(10.3)
*RP-2916-BR	PG 29	PG 16	.31 (8)	.45(11.5)
*RP-2921-BR	PG 29	PG 21	.31 (8)	.45(11.5)
*RP-3621-BR	PG 36	PG 21	.35 (9)	.49(12.5)
*RP-3629-BR	PG 36	PG 29	.35 (9)	.49(12.5)
*RP-4229-BR	PG 42	PG 29	.39 (10)	.53(13.5)
*RP-4236-BR	PG 42	PG 36	.39 (10)	.53(13.5)
*RP-4836-BR	PG 48	PG 36	.39 (10)	.53(13.5)
*RP-4842-BR	PG 48	PG 42	.39 (10)	.53(13.5)
RR-0907-BR	PG 9	PG 7	.24 (6)	.33 (8.5)
RR-1107-BR	PG 11	PG 7	.24 (6)	.33 (8.5)
RR-1109-BR	PG 11	PG 9	.24 (6)	.33 (8.5)
RR-1309-BR	PG 13	PG 9	.26 (6.5)	.35 (9)
RR-1311-BR	PG 13	PG 11	.26 (6.5)	.35 (9)
RR-1609-BR	PG 16	PG 9	.26 (6.5)	.37 (9.5)
RR-1611-BR	PG 16	PG 11	.26 (6.5)	.37 (9.5)
RR-1613-BR	PG 16	PG 13	.26 (6.5)	.37 (9.5)
RR-2111-BR	PG 21	PG 11	.27 (7)	.39 (10)
RR-2113-BR	PG 21	PG 13	.27 (7)	.39 (10)
RR-2116-BR	PG 21	PG 16	.27 (7)	.39 (10)
RR-2916-BR	PG 29	PG 16	.31 (8)	.45 (11.5)
RR-2921-BR	PG 29	PG 21	.31 (8)	.45 (11.5)
RR-3621-BR	PG 36	PG 21	.35 (9)	.49 (12.5)
RR-3629-BR	PG 36	PG 29	.35 (9)	.49 (12.5)
RR-4229-BR	PG 42	PG 29	.39 (10)	.55 (14)
RR-4236-BR	PG 42	PG 36	.39 (10)	.55 (14)
RR-4836-BR	PG 48	PG 36	.39 (10)	.55 (14)
RR-4842-BR	PG 48	PG 42	.39 (10)	.55 (14)
RR-0907-GY	PG 9	PG 7	.31 (8)	.55 (14)
RR-1109-GY	PG 11	PG 9	.31 (8)	.47 (12)
RR-1309-GY	PG 13	PG 9	.31 (8)	.47 (12)
RR-1311-GY	PG 13	PG 11	.35 (9)	.83 (21)
RR-1609-GY	PG 16	PG 9	.39 (10)	.51 (13)
RR-1611-GY	PG 16	PG 11	.39 (10)	.51 (13)
RR-1613-GY	PG 16	PG 13	.39 (10)	.98 (25)
RR-2113-GY	PG 21	PG 13	.43 (11)	.53 (13.5)

ETC...

See Website for Full List of Reducers in Grey Nylon

See Last Page for Product Specifications!

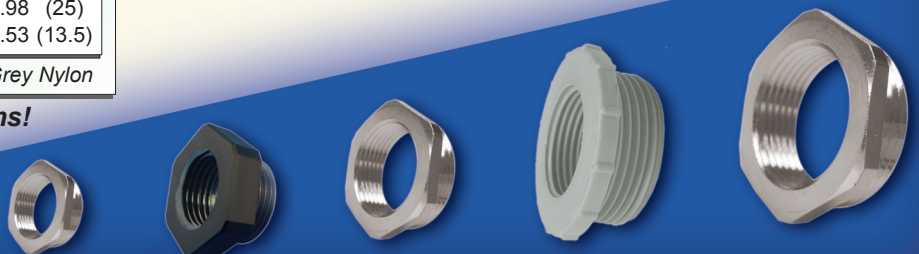
METRIC to METRIC THREADS

PART NUMBER	MALE THREAD (A)	FEMALE THREAD (B)	THREAD LENGTH (T)	HEIGHT (H)
			INCHES (MM)	INCHES (MM)
RM-1612-BK	M16 x 1,5	M12 x 1,5	.31 (8)	.55 (14)
RM-2016-BK	M20 x 1,5	M16 x 1,5	.31 (8)	.55 (14)
RM-2520-BK	M25 x 1,5	M20 x 1,5	.31 (8)	.55 (14)
RM-3225-BK	M32 x 1,5	M25 x 1,5	.39 (10)	.63 (16)
RM-4032-BK	M40 x 1,5	M32 x 1,5	.59 (15)	.79 (20)
RM-5040-BK	M50 x 1,5	M40 x 1,5	.59 (15)	.79 (20)
RM-6350-BK	M63 x 1,5	M50 x 1,5	.59 (15)	.79 (20)
RR-1612-GY	M16 x 1,5	M12 x 1,5	.35 (9)	1.06 (27)
RR-2016-GY	M20 x 1,5	M16 x 1,5	.35 (9)	1.06 (27)
RR-2520-GY	M25 x 1,5	M20 x 1,5	.39 (10)	.67 (17)
RR-3225-GY	M32 x 1,5	M25 x 1,5	.47 (12)	.75 (19)
RR-4032-GY	M40 x 1,5	M32 x 1,5	.47 (12)	.75 (19)
RR-5040-GY	M50 x 1,5	M40 x 1,5	.55 (14)	.83 (21)
RR-6350-GY	M63 x 1,5	M50 x 1,5	.59 (15)	.87 (22)
RR-1612-BR	M16 x 1,5	M12 x 1,5	.24 (6)	.33 (8.5)
RR-2012-BR	M20 x 1,5	M12 x 1,5	.26 (6.5)	.35 (9)
RR-2016-BR	M20 x 1,5	M16 x 1,5	.26 (6.5)	.35 (9)
RR-2516-BR	M25 x 1,5	M16 x 1,5	.28 (7)	.39 (10)
RR-2520-BR	M25 x 1,5	M20 x 1,5	.28 (7)	.39 (10)
RR-3220-BR	M32 x 1,5	M20 x 1,5	.31 (8)	.45 (11.5)
RR-3225-BR	M32 x 1,5	M25 x 1,5	.31 (8)	.45 (11.5)
RR-4025-BR	M40 x 1,5	M25 x 1,5	.31 (8)	.45 (11.5)
RR-4032-BR	M40 x 1,5	M32 x 1,5	.35 (9)	.49 (12.5)
RR-5032-BR	M50 x 1,5	M32 x 1,5	.39 (10)	.55 (14)
RR-5040-BR	M50 x 1,5	M40 x 1,5	.39 (10)	.55 (14)
RR-6340-BR	M63 x 1,5	M40 x 1,5	.39 (10)	.55 (14)
RR-6350-BR	M63 x 1,5	M50 x 1,5	.39 (10)	.55 (14)
RM-1612-BR	M16 x 1,5	M12 x 1,5	.20 (5)	.31 (8)
RM-2012-BR	M20 x 1,5	M12 x 1,5	.24 (6)	.35 (9)
RM-2016-BR	M20 x 1,5	M16 x 1,5	.24 (6)	.35 (9)
RM-2516-BR	M25 x 1,5	M16 x 1,5	.27 (7)	.39 (10)
RM-2520-BR	M25 x 1,5	M20 x 1,5	.27 (7)	.39 (10)
RM-3216-BR	M32 x 1,5	M16 x 1,5	.31 (8)	.43 (11)
RM-3220-BR	M32 x 1,5	M20 x 1,5	.31 (8)	.43 (11)
RM-3225-BR	M32 x 1,5	M25 x 1,5	.31 (8)	.43 (11)
RM-4020-BR	M40 x 1,5	M20 x 1,5	.31 (8)	.47 (12)
RM-4025-BR	M40 x 1,5	M25 x 1,5	.31 (8)	.47 (12)
RM-4032-BR	M40 x 1,5	M32 x 1,5	.31 (8)	.47 (12)
RM-5025-BR	M50 x 1,5	M25 x 1,5	.35 (9)	.51 (13)
RM-5032-BR	M50 x 1,5	M32 x 1,5	.35 (9)	.51 (13)
RM-5040-BR	M50 x 1,5	M40 x 1,5	.35 (9)	.51 (13)
RM-6332-BR	M63 x 1,5	M32 x 1,5	.39 (10)	.55 (14)
RM-6340-BR	M63 x 1,5	M40 x 1,5	.39 (10)	.55 (14)
RM-6350-BR	M63 x 1,5	M50 x 1,5	.39 (10)	.55 (14)

Product Options:

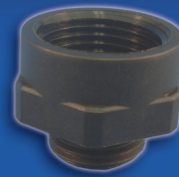
- * RP: without O-Ring
- RQ: with O-Ring

Example: RP-0907-BR becomes RQ-0907-BR





Enlargers



NPT to NPT THREADS

PART NUMBER	MALE	FEMALE	THREAD	HEIGHT
	THREAD (A)	THREAD (B)	LENGTH (T) INCHES (MM)	(H) INCHES (MM)
EN-1234-BR	1/2" NPT	3/4" NPT	.79 (20)	1.50 (38)
EN-1210-BR	1/2" NPT	1" NPT	.79 (20)	1.26 (32)
EN-3410-BR	3/4" NPT	1" NPT	.71 (18)	1.69 (43)
EN-1054-BR	1" NPT	1-1/4" NPT	.98 (25)	1.97 (50)

METRIC to METRIC THREADS

PART NUMBER	MALE	FEMALE	THREAD	HEIGHT
	THREAD (A)	THREAD (B)	LENGTH (T) INCHES (MM)	(H) INCHES (MM)
EM-1216-BK	M12 x 1,5	M16 x 1,5	.31 (8)	.79 (20)
EM-1620-BK	M16 x 1,5	M20 x 1,5	.31 (8)	.83 (21)
EM-2025-BK	M20 x 1,5	M25 x 1,5	.31 (8)	.91 (23)
EM-2532-BK	M25 x 1,5	M32 x 1,5	.59 (15)	1.18 (30)
EM-3240-BK	M32 x 1,5	M40 x 1,5	.59 (15)	1.36(34.5)
EM-4050-BK	M40 x 1,5	M50 x 1,5	.59 (15)	1.36(34.5)
EM-5063-BK	M50 x 1,5	M63 x 1,5	.59 (15)	1.38 (35)
EM-1216-BR	M12 x 1,5	M16 x 1,5	.20 (5)	.59 (15)
EM-1620-BR	M16 x 1,5	M20 x 1,5	.24 (6)	.69(17.5)
EM-2025-BR	M20 x 1,5	M25 x 1,5	.26 (6.5)	.75 (19)
EM-2532-BR	M25 x 1,5	M32 x 1,5	.26 (6.5)	.83 (21)
EM-3240-BR	M32 x 1,5	M40 x 1,5	.27 (7)	.91 (23)
EM-4050-BR	M40 x 1,5	M50 x 1,5	.35 (9)	1.22 (31)
EM-5063-BR	M50 x 1,5	M63 x 1,5	.35 (9)	1.22 (31)

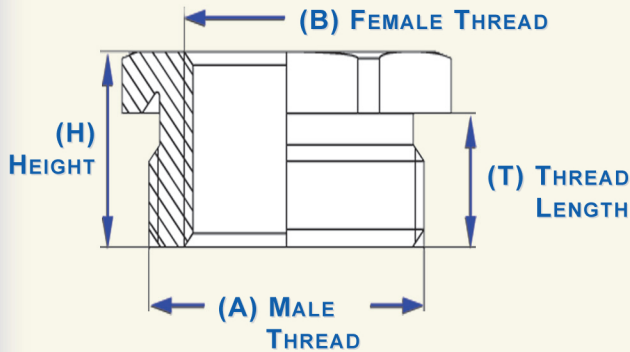
PG to PG THREADS

PART NUMBER	MALE	FEMALE	THREAD	HEIGHT
	THREAD (A)	THREAD (B)	LENGTH (T) INCHES (MM)	(H) INCHES (MM)
EP-0709-BR	PG 7	PG 9	.20 (5)	.59 (15)
EP-0911-BR	PG 9	PG 11	.24 (6)	.65(16.5)
EP-0913-BR	PG 9	PG 13	.24 (6)	.69(17.5)
EP-1113-BR	PG 11	PG 13	.24 (6)	.69(17.5)
EP-1116-BR	PG 11	PG 16	.24 (6)	.73(18.5)
EP-1121-BR	PG 11	PG 21	.24 (6)	.81(20.5)
EP-1316-BR	PG 13	PG 16	.26 (6.5)	.75 (19)
EP-1321-BR	PG 13	PG 21	.26 (6.5)	.83 (21)
EP-1621-BR	PG 16	PG 21	.26 (6.5)	.83 (21)
EP-1629-BR	PG 16	PG 29	.26 (6.5)	.88(22.5)
EP-2129-BR	PG 21	PG 29	.27 (7)	.91 (23)
EP-2936-BR	PG 29	PG 36	.31 (8)	1.08(27.5)
EP-3642-BR	PG 36	PG 42	.35 (9)	1.22 (31)
EP-4248-BR	PG 42	PG 48	.39 (10)	1.30 (33)

Custom: Not finding an Adapter, Reducer or Enlarger in your size?

Call our Inside Technical Sales to obtain your very own custom solution.

Product available in Stainless Steel upon request!



SPECIFICATIONS

MATERIALS:

BK: (Black) Nylon
GY: (Grey) Nylon
BR: Nickel Plated Brass
AL: Aluminum

RoHS
Approved

OPERATING TEMPERATURE (Nylon):

-40°F TO 212°F (-40°C TO 100°C)



Please refer to our Website for updated information or call our Inside Technical Sales.



SEALCON

7374 S EAGLE ST CENTENNIAL, CO 80112 USA

PHONE: (303)699-1135 / (800) 456-9012 FAX: (303)680-5344

E-MAIL: info@sealconusa.com WEB: www.sealconusa.com