



## NYLON & METAL CONDUIT SOLUTIONS

In industry, cables and wires are exposed to exceptional loads. Heat and cold, tensile and compressive loads, and wear-and-tear cause damage to cables and can result in malfunctions and loss of production. Our conduits provide reliable protection with options available in Nylon and Metal. In addition, a wide range of fittings makes it easy to find the right answer for every requirement.

### NYLON CONDUIT - SLIT & SOLID



#### Nylon Solid

Polyamide - Nylon, Black & Optional Grey  
-40°F - 248°F (-40°C - 120°C)



#### Nylon Slit

Polyamide - Nylon, Black & Optional Grey  
-40°F - 248°F (-40°C - 120°C)

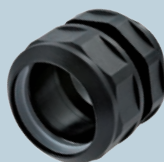
• Raw material certified according to UL94 DIN 06-50 • Protects cable against heat and cold PA 6 (standard), PA 12

### NYLON CONDUIT - SUPERFLEX

The SUPERFLEX Conduit is made of a special blend of plastics. Due to its higher flexibility, it is an ideal solution for drag chain and robotic applications.



Thermoplastic Elastomer,  
Black, IP 54, IP 65,  
-58°F - 320°F (-50°C - 160°C)



Straight Fitting  
TURN TO SEAL

Plastic, Black, IP 65, -40°F - 230°F (-40°C - 110°C)



Elbow Fitting  
TURN TO SEAL

### NYLON FITTINGS

Material: Polyamide - Nylon  
Thread Types: Metric, PG, NPT



Polyamide  
Fitting 90



Polyamide  
Fitting



Polyamide  
Fitting T



Polyamide  
Fitting Y



Polyamide  
Fitting W



Polyamide Fitting  
DUO-PA

Other fittings and brackets available

## Conduit Markets & Applications

- **Transportation** - Railroad, Shipyards, etc.
- **Light & Heavy Equipment** - Cranes, etc.
- **Automation** - Conveyors, Robotics, etc
- **Medical**
- **Construction & Architecture**
- **Renewable Energy** - Solar, Wind, etc.
- **Lighting** - Stage & Entertainment
- **Automotive**
- **HVAC**
- **Military**
- **Mining**
- **Maintenance & Repair** - MRO

Perfect for rugged environments, impact / crush resistant  
 Perfect for flexible / high bend requirement

## METAL CONDUIT - MELEON



**Metal Conduit A**  
 Galv. Steel for hot & cold, IP40  
 -148°F - 572°F (-100°C - 300°C)



**Metal Conduit B**  
 Galv. Steel with PVC, IP65  
 5°F - 158°F (-15°C - 70°C)



**Metal Conduit Pro A**  
 Smooth PVC over Galv. Steel, IP66  
 -4°F - 221°F (-20°C - 105°C)



**Metal Conduit Pro B**  
 Galv. Steel with braiding, high temp.  
 -148°F - 572°F (-100°C - 300°C)



**Metal Conduit Pro C**  
 Galv. Steel, PVC and braiding, IP65  
 5°F - 158°F (-15°C - 70°C)

## METAL FITTINGS

**Material:** Nickel Plated Brass  
**Thread Types:** Metric, PG, NPT



**Metal Fitting S (Swivel)**



**Metal Fitting**



**Metal Fitting Pro**



**Metal Fitting Pro S**

Other fittings and brackets available

Check out some of our other great Sealcon products!



Strain Relief, Circular Connectors,  
 Enclosures, Adapters and more!

# SEALCON

Leading Provider of Cable Management Solutions

7374 S. Eagle Street  
 Centennial, CO 80112  
 (800) 456-9012 (303)699-1135  
[www.SealconUSA.com](http://www.SealconUSA.com)