



With or without terminals

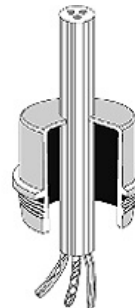
	ESM 32 <ul style="list-style-type: none"> • Grommets • for knockouts M 32 	
---	--	---

- sealing range: Ø 9-23 mm
- bore-hole: Ø 32.5 mm
- wall thickness 1.5-3.5 mm
- for indoor - normal environment and (or) protected outdoor installation
- ambient temperature - 25 °C to + 35 °C
- glow wire test IEC 60695-2-11: 750 °C
- colour: grey, RAL 7035
- degree of protection: IP 55

material	TPE (-25° to +80°C)
weight	0,008 kg
glow wire test	IEC 60695-2-11 750°C

Drawings

Dimension drawing



Operating and ambient conditions

Application area	Suitable for indoor installation and outdoor installation, protected against weather influences
Ambient temperature	Average value over 24 hours + 35 °C Maximum value + 40 °C Minimum value - 25 °C
Fire protection in the event of internal faults	Demands placed on electrical devices from standards and laws Minimum requirements - Glow wire text in accordance with IEC 60695-2-11: - 650° C for boxes and cable glands
Burning behaviour	Glow wire test IEC 60695-2-11: 750 °C UL Subject 94: - flame-retardant self-extinguishing
Toxic behaviour	halogen-free silicone-free "halogen-free" in accordance with the examination of the cables and insulated wires - corrosiveness of fumes - as per IEC 60754-2

Note:

For material properties see technical data.