


Approved for intrinsic fire resistance, material: Sheet steel



FK 9025

- Cable junction box Ø 0.8 mm / 0.5-1.5 mm², Cu
- Connection box Ø 0.8 mm / 0.5-4 mm², Cu

IP
66

E30
E60
E90

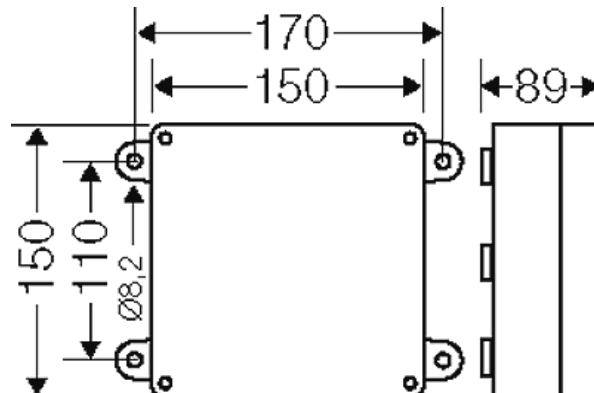
PH120

- 5-pole per pole 4 x Ø 0.8 mm / 0.5 mm² sol, 4 x 1.5 mm² r, 2 x 2.5 mm² r, 2 x 4 mm² sol
- connecting terminal made from ceramic with resistance to high temperatures
- mounted grommets 4 EDKF 32, sealing range: Ø 8-23 mm, closed
- intrinsic fire resistance in accordance with DIN 4102-12 (German standard) in combination with function-retaining cables
- tested with cable manufacturers Dätwyler, Eupen, Nexans, Studer, Pirelli and Lynenwerk for the intrinsic fire resistance E30 and E90, see test certificate no.: P-MPA-E-02-032, valid till 20 March 2023, download available from www.hensel-electric.de
- tested for insulation integrity PH120 in accordance with BS EN 50200 in connection with insulation retaining cables, see test certificate, download available from www.hensel-electric.de > type - documents
- mounted using exterior wall fixings, bore hole 8.2 mm (for dowels refer to technical data)
- for normal environment and protected outdoor
- colour: orange, RAL 2003

rated insulation voltage	U _i = 400 V a.c./d.c.
rated current:	32 A
material	Sheet steel, powder-coated
tightening torque for terminal	0.5 Nm
degree of protection	IP 66
height	150 mm
width	150 mm
depth	80 mm
weight	1,493 kg
in accordance with	DIN 4102 part 12 IEC 60670-22 BS EN 50200

Drawings

Dimension drawing



Approved for intrinsic fire resistance, material: Sheet steel

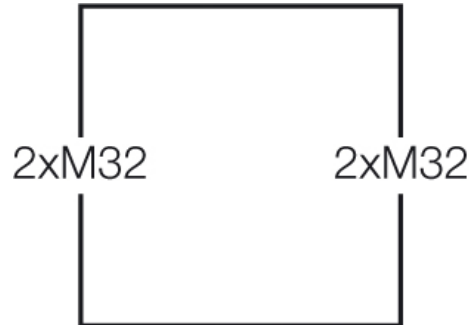


FK 9025

- Cable junction box Ø 0.8 mm / 0.5-1.5 mm², Cu
- Connection box Ø 0.8 mm / 0.5-4 mm², Cu



Box walls



Operating and ambient conditions

Application area	Suitable for indoor installation and outdoor installation, protected against weather influences
Ambient temperature	Average value over 24 hours + 35 °C Maximum value + 40 °C Minimum value - 25 °C
Relative humidity	50% at 40° C short-time 100% at 25° C
Degree of protection against mechanical load	IK10 (20 Joule)
Toxic behaviour	Sheet steel, powder-coated halogen-free "halogen-free" in accordance with the examination of the cables and insulated wires - corrosiveness of fumes - as per IEC 60754-2