

M27 SIGNAL CONNECTORS

RELIABLE DATA TRANSMISSION

The M27 Signal connector is available in 26 and 28 pole inserts with signal transmission up to 150 Volts and 8 Amps. This connector allows additional pinout options larger than M23 with the same IP67 / IP 69K rating. Operating temperature of up to 257 °F (125 °C). EMI ready options! Available in male and female thread, straight and panel mount housings connectors.



Mechanical Data	Materials and Technical Data
Housing	Copper-Zinc alloy Die Cast
Housing surface	Nickel plated Other surface upon request
Inserts	Thermoplastic Polyamide PA 6 (Nylon 6/6), PBT Fire protection class V-0
Contacts	Brass Alloy
Contact surface at point of contact	Nickel and gold plated (0.25 µm)
Minimum mating cycles	50 (Sealcon to Sealcon connector)
Seals / O-Rings	Buna-N (Black), Optional FKM (Green)
Temperature range	-40 °F – 257 °F (-40 °C – 125 °C)
Type of contacts	Crimp, solder, dip-solder (PCB)
Protection	IP 67 / IP 69K per EN 60529 (connected), NEMA 4x
Cable diameter range	.28 – .67" (7 - 17 mm)

Components Needed For A Complete M27 Signal Connector:

- HOUSING (page 59)
- INSERT (page 60)
- CONTACTS (if crimp contact insert is selected) (page 60)

Electrical Data

Number of positions	26	28
Number of contacts	26	28
Contact-Ø [mm]	1	1
Nominal current [A]	8	8
Nominal voltage [V~]	150	150
Test voltage (Breakdown voltage) [V~]	1500	1500
Insulation resistance [MΩ]	> 10 ¹²	> 10 ¹²
Max. contact resistance [mΩ]	3	3
Degree of Protection	3	3



SEE TECHNICAL INFORMATION ON PAGE 80

*ASSEMBLY INSTRUCTIONS CAN BE FOUND AT WWW.SEALCONUSA.COM OR BY CALLING US AT 1-800-456-9012

M27 SIGNAL CONNECTORS

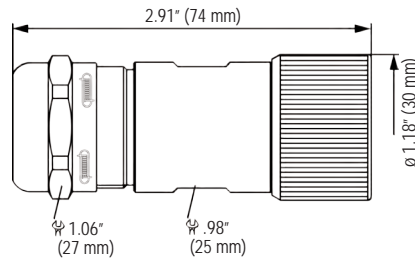
HOUSINGS, ACCESSORIES

M27 Signal Straight Connector, EMI, Female Thread

Cable-Ø

Part Number

7 - 12 mm (.28 - .47")S7.110.500.000
11 - 17 mm (.43 - .67")S7.110.600.000

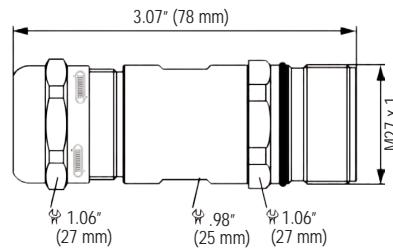


M27 Signal Straight Connector, EMI, Male Thread

Cable-Ø

Part Number

7 - 12 mm (.28 - .47")S7.210.500.000
11 - 17 mm (.43 - .67")S7.210.600.000

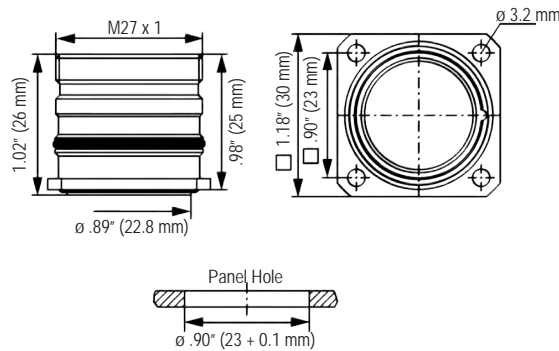


M27 Signal Panel Connector, Male Thread, Flange

Type

Part Number

Front Mounting, Flange 30 x 30 mm	
4 x Holes 3.2 mmS7.410.700.000



M27 Signal Accessories



Plastic Protective Cap for connectors
with male thread.....S7.000.980.167
with female thread.....S7.000.980.168



Brass Protective Cap for connectors with
female thread.....S7.010.900.169



Brass Protective Cap for connectors with
male thread.....S7.010.900.170



Brass Protective Cap with chain for connectors
with female thread
Length 70 mm.....S7.010.9S0.707



Brass Protective Cap with chain for connectors
with male thread
Length 70 mm.....S7.010.9S0.708



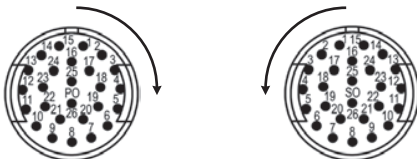
Crimp Tool for manual crimping of machined crimp
contacts works with contacts for power or signal
.....S7.000.900.901 / 904

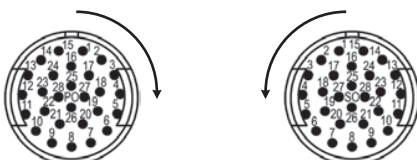


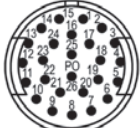

Assembly Tool.....S7.010.900.110



M27 SIGNAL CONNECTORS

INSERTS, CONTACTS

Inserts 26-pole	Type	Part Number	Part Number
 <p>Insert Pin Mating View (clockwise orientation)</p> <p>Insert Socket Mating View (counterclockwise orientation)</p>	Pinout clockwise	Pins	Sockets
	Insert with solder contacts.....	S7.001.926.103.....	S7.001.926.104
	Insert without contacts.....	S7.003.926.101.....	S7.003.926.102
	Insert with dip solder contacts Length 10 mm.....	S7.001.926.127	
	The correct dimension of a connector with dip solder contacts depends on the particular type of housing.		

Inserts 28-pole	Type	Part Number	Part Number
 <p>Insert Pin Mating View (clockwise orientation)</p> <p>Insert Socket Mating View (counterclockwise orientation)</p>	Pinout clockwise	Pins	Sockets
	Insert with solder contacts.....	S7.001.928.103	S7.001.928.104

M27 Signal Contact Arrangement	Number of Poles	Required Contacts
	26.....	26 x 1 mm
	28.....	28 x 1 mm

M27 Signal Contacts	Type	Crimp Range	Part Number
	Crimp Pin 1 mm, machined	0.14 - 0.56 mm ² (AWG26 - AWG 17)	S7.010.971.001
	Crimp Socket 1 mm, machined	0.14 - 0.56 mm ² (AWG26 - AWG 17)	S7.010.971.002

M27 Signal Connectors