

# SEALCON

Leading Provider of Cable Management Solutions



With over 6,000+ options available, we have what you need for your application. Whether you are looking for **Cable Glands, Circular Connectors, Enclosures, Accessories, Conduit Systems, or European / Domestic Cable & Wire**, our quality products will exceed your demands.

## Liquid Tight Cable Glands



- NEMA 4x & 6 (IP68 / IP69K)
- Submersible (300 ft) & Non-Corrosive
- Pressure Rating: 150 PSIG / 10 BAR
- Flammability Rating: V0 (Phosphorous & Halogen-Free)
- Overlapping clamping splines apply concentric pressure, protecting your cable from damage
- ULf1 (746C) Solar / Outdoors (Black Nylon Only)
- Types: Dome, Flex, Elbow, EMI/RFI, PVDF, Hygienic
- Hazardous Non-Armored/Armored, A2F, Ex-e/-d, HazLoc Class, Div, Zone Ratings

## UL Industrial Enclosures

- Type NEMA 4x (IP67) and IP 69K & 10K Impact Resistance
- Material: Polycarbonate, Fiberglass, Pushbutton
- Features: Smooth walls, PG/Metric Knock-Outs, Solid/Transparent Lids, Hinges, Latches
- Customization Available, Call for Details



## Cable Gland Accessories



- Adapters, Reducers and Enlargers
- Hole Plugs, Dome Plugs, Locking Nuts
- Nylon, Nickel Plated Brass, Stainless Steel
- Blind Plugs, O-Rings, Seal Rings and More

## Conduit Systems

- Corrugated Nylon Conduit (Standard, Super-Flex)
- Straight, Elbow
- Push-In & Turn-To-Seal
- Compatible Fixed and Swivel Fittings



## Industries Served:

- Solar
- Pumps
- Motors
- Lighting
- Robotics
- Automation
- Packaging
- Wind
- Automotive
- Data Centers
- Marine
- Medical
- Traffic
- Food
- And More

\*Approvals may not be applicable to all products.

Phone 303-699-1135 | 800-456-9012  
Info@SealconUSA.com | www.SealconUSA.com



# SEALCON

Leading Provider of Cable Management Solutions



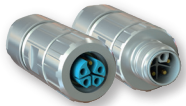
Power, Signal & Ethernet: All-In-One

**HYBRID CONNECTORS**  
M16 | M23 | M40



**M40**  
55 Amp / 600V

**POWER CONNECTORS**



**M12**  
16 Amp / 630V



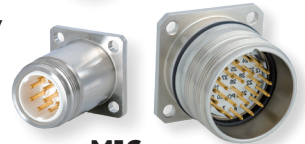
**M23**  
28 Amp / 600V

**SIGNAL CONNECTORS**



**M27**  
8 Amp / 150V

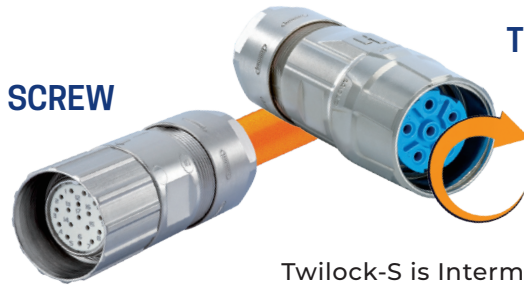
**M23**  
20 Amp / 300V



**M16**  
16 Amp / 600V

## Features & Benefits

- Built-in Strain Relief:** All Connectors EMI/RFI ready!
- Housing Types:** Straight, Elbow, Panel Mount, Radius, Single Hole, Molded
- Multiple Terminations:** Crimp, Solder, Dip Solder, & Screw Solutions
- Pre-tinned Contacts:** Reliable, faster and safer means of soldering
- Reliable Connection:** Contacts with Low Plug-in Force & High Mating Cycles
- Vibration Proof:** Spring Loaded Socket Contact Technology
- IP67 & IP69K:** Ideal in spray down applications



**SCREW**

**TWILOCK / TWILOCK-S**

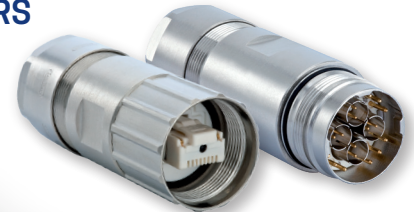
Quick Connect

1/4 Turn Locking System

Twilock-S is Inter-matable with Intercontec TE Connectors.

**PoE / RJ45 CONNECTORS**

**M23**  
CAT 5, 5e, 6a, 7 / Gigabit Data  
8 Amp / 160V



**CUSTOM KITTING / PACKAGING**

**ONE-STOP SHOP FOR ALL CABLE MANAGEMENT NEEDS**

**CABLE & WIRE**



Get it all in a Bag

## Cable Types

- Control / Intrinsically Safe
- Data & Computer
- Robotic & Drag Chain
- Halogen-Free
- Int'l Approved / Tray Rated
- Servo, Feedback & Motor
- Hook-up Wire, Etc.

